

Collaborative Exploration and Collection of Vegetable Genetic Resources in Southeastern Region of the Tonlé Sap Lake, Cambodia, 2024

Marina OGURA ¹⁾, Dolla ROS ²⁾, Phuryma DIEP ²⁾, Chhourn ORN ²⁾,
Sophany SAKHAN ²⁾, Bunna LOR ²⁾, Koichiro SHIMOMURA ¹⁾

1) *National Institute of Vegetable and Floriculture Science, National Agriculture and Food Research Organization, 360 Kusawa, Ano, Tsu, Mie 514-2392, Japan*

2) *Cambodian Agricultural Research and Development Institute, National Road 3, Prateah Lang, Kamboul, P.O. Box 01, Phnom Penh, Cambodia*

Summary

The Cambodian Agricultural Research and Development Institute (CARDI) and the National Agriculture and Food Research Organization (NARO) conducted collaborative exploration in the southeastern region of Tonlé Sap Lake in Cambodia in December 2024. This area is known for its fertile soil deposited by seasonal flooding during the rainy season and was selected as a promising region for the collection of vegetable landraces. We visited 21 sites including local farmers and a roadside vendor and collected 105 accessions from 17 species across seven families. We conducted interviews with farmers and a vendor to get detailed information such as sowing and harvesting periods, local names, physical traits, and how the vegetables are used in cooking. All accessions are conserved in CARDI genebank, and half of them were transferred to NARO genebank under the Standard Material Transfer Agreement. These resources can contribute to the improvement of vegetable breeding and the maintenance of genetic diversity.

KEY WORDS: Cambodia, Genetic resources, Cucurbitaceae, Fabaceae

Introduction

The maintenance and use of plant genetic resources has become more important for plant breeding. Recently, national regulations on the rights to genetic resources have made international exchange more complicated. To address the increasing complexity of accessing and conserving plant genetic resources, the Plant Genetic Resources in Asia (PGRAsia) project was launched in 2014 by Ministry of Agriculture, Forestry and Fisheries, Japan and the Genebank of the National Agriculture and Food Research Organization (NARO). Currently, nine universities, eight prefectural research institutes, and six research institutes from five Asian countries are participating in this project. PGRAsia put an emphasis on the collection and utilization of plant genetic resources,

particularly vegetable species that are important to both Japan and its partner countries. Through collaborative exploration, a large number of vegetable genetic resources have been collected, and evaluations of agriculturally important traits have been conducted.

Cambodia is one of an important partner country in the PGRAsia project. While the country is undergoing rapid urbanization alongside economic growth, agriculture remains a key industry. According to the National Institute of Statistics (2025), the agricultural population is approximately 7.3 million, accounting for about 42% of the total population. Cambodia possesses diverse ecosystems ranging from lowland floodplains to highland areas, where a wide variety of crops including rice and vegetables are cultivated. Traditional

landraces that have been maintained over generations can be likely to possess valuable traits adapted to regional environments. Although subsistence farming still makes up the majority, commercial farming has gradually expanded in recent years, and the production of cash crops has also increased (Khan *et al.* 2022). These changes may be influencing the cultivation status of traditional varieties. Since the establishment of the project, the Cambodian Agricultural Research and Development Institute (CARDI) and NARO have collaboratively conducted explorations of genetic resources across multiple regions in Cambodia, resulting in the accumulation of a substantial amount of plant genetic resources (Matsunaga *et al.* 2015, 2018, 2019; Ouch *et al.* 2021a, 2021b; Tanaka K *et al.* 2016, 2017, 2019, 2023, 2024; Tanaka Y *et al.* 2016; Okuizumi *et al.* 2017, 2020; Sreynech *et al.* 2016; Sugita *et al.* 2017; Matsushima *et al.* 2018; Yashiro *et al.* 2019; Kondo *et al.* 2019; Kawazu *et al.* 2020; Sudasinghe *et al.* 2020; Takeshima *et al.* 2020; Yon *et al.* 2022a, 2022b; Odera *et al.* 2023; Shimomura *et al.* 2024).

In this report, we describe the results of a collaborative exploration of vegetable genetic resources conducted by NARO and CARDI in December 2024. While many regions in Cambodia have already been explored, this exploration focused on the southeastern region of the Tonlé Sap Lake, which had not been explored yet. The Tonlé Sap Lake and its drainage area are agronomically important areas in Cambodia and are estimated as ideal region for finding new genetic resources. The region has fertile soils from seasonal flooding, which help the cultivation of various crops, including traditional vegetable landraces.

Methods

CARDI and NARO worked together on the exploration during the dry season of 2024. We stayed in Kampong Chhnang, Kampong Thom, and Kampong Cham provinces from December 3 (Table 1). We visited 21 sites, mainly in villages near the Tonlé Sap Lake and along the Tonlé Sap River, including farmer's houses and a roadside vendor (Fig. 1). We used a boat to cross

Table 1. Itinerary of the exploration in Cambodia, 2024

Date (month / day)	Day	Itinerary	Stay
12/3	Tue	Japan - Phnom Penh	Phnom Penh
12/4	Wed	Phnom Penh - Kampong Chhnang	Kampong Chhnang
12/5	Thu	Kampong Chhnang	Kampong Chhnang
12/6	Fri	Kampong Chhnang - Kampong Thom	Kampong Thom
12/7	Sat	Kampong Thom	Kampong Thom
12/8	Sun	Kampong Thom - Kampong Cham	Kampong Cham
12/9	Mon	Kampong Cham - Phnom Penh	Phnom Penh
12/10	Tue	CARDI (Phnom Penh)	Phnom Penh
12/11	Wed	Phnom Penh	On flight

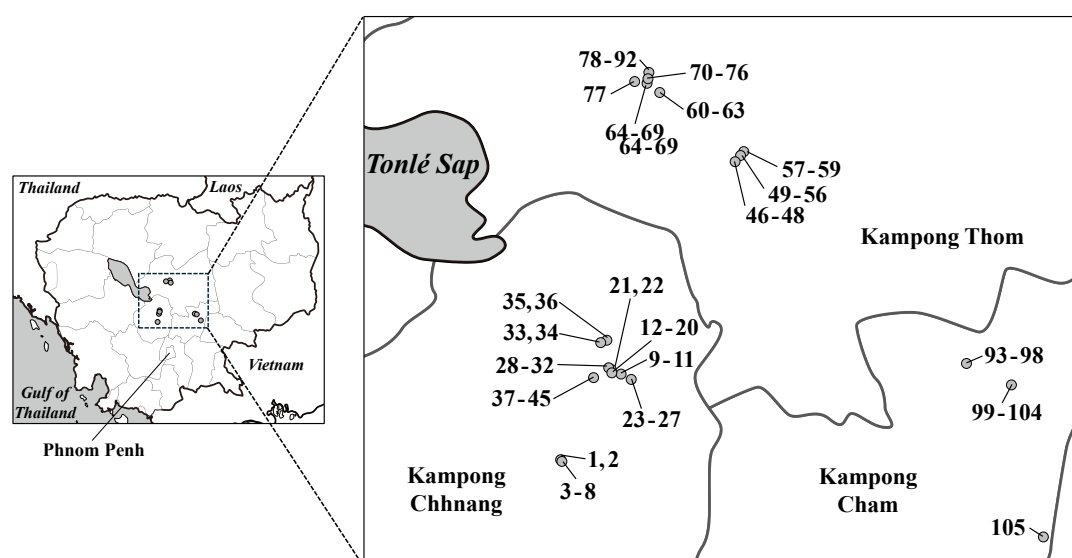


Fig. 1. Collection sites in southeastern region of Tonlé Sap Lake. 21 collection sites are indicated by circle with accession numbers.

the Tonlé Sap River on December 5 and 6 to survey the river's sandbanks (Photo 1). Samples of seeds, fruits, and pods of landrace grown in backyard or sold at a roadside vendor were taken with the cooperation of local farmers and a vendor (Photo 2). Seeds preserved by farmers were collected, and seeds kept in fruits or pods were processed (Photos 3-5). The seeds were cleaned to remove husks and other debris, and when seeds with visibly different morphological traits were found mixed in storage, each type was collected as a separate accession. Information



Photo 1. Tonlé Sap River side area.



Photo 2. Seeds processing with farmer.

such as local name, sowing and harvesting period, and usage was gathered through interviews with farmers and a vendor (Photos 6 and 7). A Garmin eTrex20J GPS device (Garmin International Inc., Olathe, KS, USA) was used to record the geographic coordinates of each site.

Results and Discussion

Through the exploration, we collected 105 accessions from 21 sites (Table 2). The list of collected samples and their corresponding photos are presented in Table 3 and Sample Photos 1 to 105. These accessions are from 17 species from seven plant families: Cucurbitaceae, Fabaceae, Lamiaceae, Solanaceae, Pedaliaceae, Malvaceae, and Poaceae. The Cucurbitaceae family included 13 accessions of *Benincasa hispida* Cogn. (wax gourd), 17 of *Cucumis melo* L. (melon), three of *C. sativus* L. (cucumber), five of *Cucurbita moschata* Duch. (pumpkin), three of *Lagenaria siceraria* (Molina) Standl. var. *siceraria*



Photo 5. Seeds extraction from fruit.



Photo 3. Stored seeds, fruits, pods.



Photo 6. Interview with farmer.



Photo 4. Seeds stored in plastic bottles.



Photo 7. Interview with a roadside vendor.

Table 2. Summary of the collected genetic resources in Cambodia, 2024

Family	Species	No. of samples
Cucurbitaceae	<i>Benincasa hispida</i> Cogn.	13
	<i>Cucumis melo</i> L.	17
	<i>Cucumis sativus</i> L.	3
	<i>Cucurbita moschata</i> Duch.	5
	<i>Lagenaria siceraria</i> (Molina) Standl. var. <i>siceraria</i>	3
	<i>Luffa acutangula</i> Roxb.	2
	<i>Luffa cylindrica</i> M. Roem.	15
Fabaceae	<i>Psophocarpus tetragonolobus</i> (L.) DC.	1
	<i>Vigna radiata</i> (L.) wilczek	14
	<i>Vigna unguiculata</i> (L.) Walpers cv-gr. <i>Sesquipedalis</i> E. Westphal	4
	<i>Vigna unguiculata</i> (L.) Walpers cv-gr. <i>Unguiculata</i> E. Westphal	11
Lamiaceae	<i>Ocimum basilicum</i> L.	2
	<i>Ocimum tenuiflorum</i> L.	2
Solanaceae	<i>Solanum melongena</i> L.	5
Pedaliaceae	<i>Sesamum indicum</i> L.	4
Malvaceae	<i>Abelmoschus esculentus</i> (L.) Moench	3
Poaceae	<i>Zea mays</i> L.	1
		105

(bottle gourd), two of *Luffa acutangula* Roxb. (ridge gourd), and 15 of *L. cylindrica* M. Roem. (sponge gourd). The Fabaceae family included one accession of *Psophocarpus tetragonolobus* (L.) DC. (winged bean), 14 of *Vigna radiata* (L.) Wilczek (mung bean), four of *V. unguiculata* (L.) Walpers cv-gr. *Sesquipedalis* E. Westphal (yard long bean), and 11 of *V. unguiculata* (L.) Walpers cv-gr. *Unguiculata* E. Westphal (cowpea). Within the Lamiaceae family, two accessions of *Ocimum basilicum* L. (sweet basil) and two of *O. tenuiflorum* L. (holy basil) were collected. In addition, five accessions of *Solanum melongena* L. (eggplant), four of *Sesamum indicum* L. (sesame), three of *Abelmoschus esculentus* (L.) Moench (okra), and one of *Zea mays* L. (maize) were collected.

At the farmers visited, vegetables are cultivated in small spaces such as backyard gardens, with most of the harvest used for household consumption. A few farmers also sell surplus produce at local markets. Farmers cultivate rice during the rainy season, with vegetable cultivation carried out concurrently. At many of the farmers visited, rice was observed being dried in the yards (Photo 8). Vegetables are consumed raw with “prahok”, a fermented freshwater fish condiment (Photo 9), and were also used in a variety of dishes as stir-fries and soups.

1) *B. hispida* (Wax gourd)

Thirteen wax gourds were collected. All local names had “Tro lach,” followed by words describing traits of each accession. For example, “srov” means rice, “krobei”



Photo 8. Drying rice grains.



Photo 9. Grilled prahok with vegetables.

means buffalo, “preng” means smooth, “chen” means China, and “sor” means white. The sowing and harvest period range from 1.5 to 3 months. Fruit samples were about 25 cm to 65 cm in length. They are commonly used in soups, salads, stir-fries, and wax gourd candy. Many farmers cultivate wax gourds by suspending them using wooden frames (Photo 10).

2) *C. melo* (Melon)

Seventeen melon accessions were collected, with

15 called “Trosok srov” and 2 called “Trosok pa’eam,” “pa’eam” means sweet. The cultivation period ranged from 1 to 5 months. Interviews showed that fruit shapes were spherical, elliptical, and cylindrical forms. Based on available information about skin color, elliptical fruits were found to be solid white. Cylindrical fruits showed striped patterns such as white and yellow, white and green, and yellow and green. Melons are used in salads, including immature fruits, while mature ones are mostly used as desserts with milk and sugar. At the time of the visit, there was a farmer growing two landraces of melons through ground cultivation (Photo 11).

3) *C. sativus* (Cucumber)

All three cucumber accessions are called “Trosok treung”. The harvest period ranged from 30 to 40 days. They are used to make pickles, stir-fries, and salads.

4) *C. moschata* (Pumpkin)

All five pumpkin accessions were *C. moschata* and had “Lpov” in their local name. In the local name “Lpov kantol”, the term “kantol” refers to the characteristic of the fruit becoming large and thick. The “tru” in “Lpov tru” refers to a Cambodian traditional fishing equipment and the pumpkin was named for its resemblance to that tool. The “thai” in “Lpov thai” suggests that the landrace may have originated from Thailand. According to interviews, small fruits are 5-10 cm long and 20-30 cm wide, while larger ones are up to 30 cm long and 50 cm



Photo 10. Cultivation of wax gourds.



Photo 11. Cultivation of melons.

wide. Fruit textures ranged from sticky to mealy. They are used to make soups and desserts.

5) *L. siceraria* (Bottle gourd)

All of three accessions are called “Khlok.” They are used in stir-fries, soups, and salads.

6) *L. acutangula* (Ridge gourd) and *L. cylindrica* (Sponge gourd)

All *Luffa* genus accessions had local names starting with “Nor nong.” The two ridge gourd accessions are called “Nor nong chrong,” where “chrong” means square. This likely refers to the fruit angular appearance. Sponge gourd accessions had names like “Nor nong mou” (round), “Nor nong proher” (smell good), and “Nor nong sral” (light). Ridge gourd is harvested about 2 months after sowing, while sponge gourd took 1.5 to 3 months. Both are put in soups, salads, and stir-fries. Many farmers cultivate *Luffa* genus species by suspending the plants on wooden frames, like wax gourds cultivation (Photo 12).

7) *P. tetragonolobus* (Winged bean), *V. radiata* (Mung bean) and *V. unguiculata* (Yard long bean and Cowpea)

All legume accessions had local names starting with “San deak,” followed by words like “loeung” (yellow), “preng” (oil), “bay” (cooked rice), “kroh” (red), “kur” (pod), and “angkuy” (sit). Winged beans are put in salads. Mung beans are used in “Kralan” (a sticky rice cake) and used as bean sprouts. Yard long beans are put in curries, soups, salads, stir-fries, and rice cakes. Cowpeas are used in salads, rice cakes, and porridge. The sowing to harvest time varied: mung beans took about 2 to 5 months, yard long beans ranged from 1 to 5 months, and cowpeas took 2 to 4 months.

8) *S. melongena* (Eggplant)

Eggplant accessions are called “Trob.” The fruits were spherical with green and white stripes, turning yellow when they are ripe. They are put in soups, salads,



Photo 12. Cultivation of sponge gourds.

and grilled dishes.

9) Other accessions

A. esculentus (okra) is put in soups, salads, stir-fries, and grilled dishes. It's also put into noodles. *O. basilicum* (sweet basil) and *O. tenuiflorum* (holy basil) are used in soups, stir-fries, salads, and sauces. *S. indicum* (sesame) is put in sweets and soups; its extracted oil is used medicinally, mainly as a remedy for muscular pains. *Z. mays* (maize) are eaten as salad when immature and boiled when mature.

In this exploration, a large number of accessions belonging to the Cucurbitaceae and Fabaceae were collected, indicating their important role in the local food culture. Most of the harvests of landraces are used to household consumption, and some farmers sell surplus at local markets. However, vegetable farmers face multiple challenges, including pest and disease outbreaks, climate change such as floods and droughts, low selling prices, and post-harvest losses due to quality deterioration (Pinn *et al.* 2020). From an economic perspective, the cultivation of landraces is less profitable and is likely to be replaced by more profitable improved varieties or crops. At the markets, we found that seeds of improved varieties introduced from Thailand were being sold (Photo 13). In the future, with advancements such as improved farming techniques and the development of logistics infrastructure, this trend is expected to accelerate further. Such development poses a serious risk not only to local food culture but also to the conservation of traditional landraces, which are valuable genetic resources for future breeding. The genetic resources collected through this exploration are important, not only for their scientific value as breeding materials but also as cultural and historical heritage. To ensure the sustainable utilization and conservation of these resources, collaboration between research institutes and local farmers is essential. By integrating traditional knowledge held by farmers with scientific evaluation, it is possible



Photo 13. Vegetable seeds from Thailand.

to contribute to the development of vegetable varieties adapted to local conditions, while also supporting food security and biodiversity conservation.

Genetic resources

A total of 105 accessions are kept as genetic resources in the CARDI gene bank. A subset was sent to the NARO gene bank under the Standard Material Transfer Agreement (SMTA), and they were given JP numbers and stored.

Acknowledgments

This work was supported by MAFF commissioned project study on “A Collaborative Research Project on Characterization and Evaluation of Plant Genetic Resources for Food and Agriculture (PGRAsia)” Grant Number JPJ009843. The collaborative exploration was done under the Joint Research Agreement (JRA) signed in 2024 by Dr. Makoto Sugiura, director of the Research Center of Genetic Resources, NARO (NGRC), Japan, and Dr. Lor Bunna, director of the Cambodian Agricultural Research and Development Institute, Cambodia (CARDI).

References

- Kawazu Y, Kuzuya M, Ouch S, Sakhan S and Ouk M (2020) Collaborative exploration of Cucurbitaceae genetic resources in eastern Cambodia, 2019. AREIPGR 36: 92–111. [Genebank, NARO], [JaLC]
- Khan D, Pillot D and Sirisupluxana P (2022) Assessing processes of change and innovation in smallholders agriculture around Tonle Sap Lake, Cambodia. Songklanakarin J Sci Technol 44 (1): 66–71. [DOI: 10.14456/sjst-psu.2022.11]
- Kondo F, Layheng S, Tokuda M, Rathnayaka RMSMB, Sakhan S and Matsushima K (2019) Collaborative exploration of plant genetic resources in northern Cambodia, 2018. AREIPGR 35:162–184. [Genebank, NARO], [JaLC]
- Matsunaga H, Matsushima K, Tanaka K, Theavy S, Heng SL, Channa T, Takahashi Y and Tomooka N (2015) Collaborative exploration of the Solanaceae and Cucurbitaceae vegetable genetic resources in Cambodia, 2014. AREIPGR 31: 169-187 [Genebank, NARO], [JaLC]
- Matsunaga H, Tanaka Y, Leakhena M and Sakhan, S (2019) Collaborative exploration of Solanaceae vegetable genetic resources in Central and mid-western Cambodia in 2018. AREIPGR 35: 106-120 [Genebank, NARO], [JaLC]

- Matsunaga H, Yokota M, Leakhena M and Sakhan S (2018) Collaborative exploration of Solanaceae vegetable genetic resources in southern Cambodia, 2017. AREIPGR 34: 102–117. [Genebank, NARO], [JaLC]
- Matsushima K, Layheng S, Hatakeyama K, Kurumada S and Sakhan S (2018) Collaborative exploration of plant genetic resources in eastern Cambodia, 2017. AREIPGR 34: 118–136. [Genebank, NARO], [JaLC]
- National Institute of Statistics (2025) Census of Agriculture Cambodia 2023: National report on final census results. National Institute of Statistics, Phnom Penh, Cambodia, 186 p. [Open Development Mekong]
- Odera T, Ouch S, Sakhan S, Thun V, Lor B and Shimomura K (2023) Collaborative exploration of vegetable genetic resources in western Cambodia. AREIPGR 39: 130–143. [Genebank, NARO], [JaLC]
- Okuizumi H, Nonaka E, Seang L, Orn C, Sakhan S and Ouk M (2017) Collaborative exploration and collection of plant genetic resources in Cambodia in December 2016. AREIPGR 33: 143–173. [Genebank, NARO], [JaLC]
- Okuizumi H, Ouch S, Seang L, Sakhan S and Ouk M (2020) Collaborative field exploration and collection of plant genetic resources in Cambodia, April-May 2019. AREIPGR 36: 80–91. [Genebank, NARO], [JaLC]
- Ouch S, Ros D, Sakhan S, Thun V, Ouk M, Tanaka K and Kawazu Y (2021a) Exploration and collection of plant genetic resources in northeastern Cambodia, 2021. AREIPGR 37: 68–82. [Genebank, NARO], [JaLC]
- Ouch S, Tanaka K, Ros D, Sakhan S, Thun V, Ouk M, Kawazu Y and Kato K (2021b) Exploration and collection of vegetable genetic resources in northern Cambodia, 2020. AREIPGR 37: 83–99. [Genebank, NARO], [JaLC]
- Pinn T, Reach S, Buntong B and Acedo A JR (2020) Vegetable farming practices in Cambodia: Case study of small-scale vegetable farmers in Kandal, Kampong Chhnang and Battambang provinces. IJERD 11(1): 57–62. [JaLC]
- Shimomura K, Odera T, Ros D, Eang S, Sakhan S, Thun V and Lor B (2024) Collaborative exploration of vegetable genetic resources in central Cambodia around the southern part Tonlé Sap Lake. AREIPGR 40: 109–132. [Genebank, NARO], [JaLC]
- Sreynech O, Sakhan S, Nonaka E and Okuizumi H (2016) Collaborative exploration and collection of plant genetic resources in Cambodia November 2015. AREIPGR 32: 89–107. [Genebank, NARO], [JaLC]
- Sudasinghe SP, Mat L, Bando K, Yamaguchi K, Sakhan S, Ouk M and Matsushima K (2020) Collaborative exploration of plant genetic resources in southern Cambodia, 2019. AREIPGR 36: 128–147. [Genebank, NARO], [JaLC]
- Sugita T, Matsunaga H, Theavy S and Sakhan S (2017) Collaborative exploration of *Capsicum* genetic resources in northern Cambodia, 2016. AREIPGR 33: 207–221. [Genebank, NARO], [JaLC]
- Takeshima R, Nemoto K, Mat L, Ros D, Ouch S, Sakhan S and Ouk M (2020) Collaborative exploration of amaranth vegetable germplasm in Cambodia, 2019. AREIPGR 36: 112–127. [Genebank, NARO], [JaLC]
- Tanaka K, Duong TT, Yamashita H, Heng SL, Sakhan S and Kato K (2016) Collection of cucurbit crops (Cucurbitaceae) from eastern Cambodia, 2015. AREIPGR 32: 109–137. [Genebank, NARO], [JaLC]
- Tanaka K, Shigita G, Dung TP, Sophea Y, Thun V, Sakhan S and Kato K (2019) Collection of melon and other cucurbitaceous crops in Cambodia in 2017. AREIPGR 35: 121–146. [Genebank, NARO], [JaLC]
- Tanaka K, Shigita G, Sophea Y, Thun V, Sakhan S and Kato K (2017) Collection of melon and other cucurbitaceous crops in Cambodia in 2016. AREIPGR 33: 175–205. [Genebank, NARO], [JaLC]
- Tanaka K, Yon S, Chin V, Ouch S, Sakhan S, Thun V, Lor B and Kato K (2024) Exploration and collection of vegetable genetic resources in northern Cambodia. AREIPGR 40: 133–157. [Genebank, NARO], [JaLC]
- Tanaka K, Yon S, Ouch S, Ros D, Sakhan S, Thun V, Lor B and Kato K (2023) Exploration and collection of vegetable genetic resources in eastern Cambodia. AREIPGR 39: 144–172. [Genebank, NARO], [JaLC]

Tanaka Y, Matsunaga H, Theavy S, Heng SL and Sakhan S (2016) Collaborative survey of solanaceous genetic resources in eastern Cambodia, 2015. AREIPGR 32: 139–157.

[Genebank, NARO], [JaLC]

Yashiro K, Tanaka K, Sophea Y, Thun V, Sakhan S and Kato K (2019) Collaborative exploration of Cucurbitaceae vegetable genetic resources in western and northwestern Cambodia in 2018. AREIPGR 35: 147–161.

[Genebank, NARO], [JaLC]

Yon S, Ros D, Ouch S, Sakhan S, Thun V, Lor B, Tanaka K and Kawazu Y (2022a) Exploration and collection of plant genetic resources in southwestern Cambodia, 2022. AREIPGR 38: 84–102.

[Genebank, NARO], [JaLC]

Yon S, Tanaka K, Ouch S, Ros D, Sakhan S, Thun V, Lor B, Kawazu Y and Kato K (2022b) Exploration and collection of vegetable genetic resources in southern Cambodia, 2021. AREIPGR 38: 103–124.

[Genebank, NARO], [JaLC]

カンボジアのトンレサップ湖南東部地域における 野菜遺伝資源の共同探索と収集，2024年

小倉 真里奈¹⁾・Dolla ROS²⁾・Phuryma DIEP²⁾・Chhourm ORN²⁾・
Sophany SAKHAN²⁾・Bunna LOR²⁾・下村 晃一郎¹⁾

1) 国立研究開発法人 農業・食品産業技術総合研究機構 野菜花き研究部門

2) カンボジア農業研究開発研究所

和文摘要

カンボジア農業研究開発研究所（CARDI）と国立研究開発法人農業・食品産業技術総合研究機構（農研機構）は、カンボジアのトンレサップ湖南東部地域において遺伝資源探索および収集を実施した。この地域は雨季の季節的な氾濫によって堆積した肥沃な土壌で知られていることから、野菜の在来品種の収集に適した有望な地域として選定した。調査では、地元農家や路上販売者を含む21か所を訪問し、7科17種にわたる105点の遺伝資源を収集した。内訳は、トウガンが13点、メロンが17点、キュウリが3点、ニホンカボチャが5点、ヒョウタンが3点、トカドヘチマが2点、ヘチマが15点、シカクマメが1点、リョクトウが14点、ジュウロクササゲが4点、ササゲが11点、バジルが2点、カミメボウキが2点、ナスが5点、ゴマが4点、オクラが3点、トウモロコシが1点であった。収集した全ての遺伝資源をCARDIのジーンバンクで保存し、そのうち半分を標準材料移転契約（SMTA）に基づき農研機構遺伝資源研究センターへ送付し、JP番号を付与して保存している。

Table 3. Genetic resources collected in Cambodia, 2024

Coll. No.	JP No.	Coll. Date 2024	Species name	Local name	Type of sample	Status of sample	Coll. source	Province	District	Commune	Village name	Latitude	Longitude	Altitude (m)	Remarks
2024 A01	293724	4-Dec	<i>Cucumis sativus</i> L.	Trosok treung	seed	landrace	farm store	Kampong Chhnang	Rolea Prea	Rolea Prea	Trapaeng Trach	N12-08-26.28	E104-38-25.63	24	Sowing in May, harvesting in June; making soup and pickle; one-time crossed line after the farmer has obtained; fruit length is 10-20 cm, small cultivar.
2024 A02	293725	4-Dec	<i>Cucurbita moschata</i> Duch.	Lvop tru	seed	landrace	farm store	Kampong Chhnang	Rolea Prea	Rolea Prea	Trapaeng Trach	N12-08-26.28	E104-38-25.63	24	Sowing in May, harvesting in July (2 months after sowing); soup is made from young fruit and dessert is made from mature fruit; no chemical pesticides are used; fruit length is 30 cm; width is 50 cm.
2024 A03	293726	4-Dec	<i>Luffa acutangula</i> Roxb.	Nor nong chrong	seed	landrace	farm store	Kampong Chhnang	Rolea Prea	Rolea Prea	Trapaeng Trach	N12-08-14.16	E104-38-28.29	28	Sowing in June, harvesting in July; from other farmer; one time crossing; making soup, porridge, salad and stir frying; fruit length is 30 cm, width is 8-10 cm.
2024 A04	293727	4-Dec	<i>Solanum melongena</i> L.	Trob srouy	seed	landrace	farm store	Kampong Chhnang	Rolea Prea	Rolea Prea	Trapaeng Trach	N12-08-14.16	E104-38-28.29	28	Sowing in June, harvesting in July; seeds are provided from other farmer; three-time crossing; fruit has green skin with white stripe, and spherical shape about 3 cm in diameter; making soup, salad and stir frying.
2024 A05	293728	4-Dec	<i>Vigna unguiculata</i> (L.) Walpers cv-gr. Unguiculata E. Westphal	San deak angkuy	seed	landrace	farm store	Kampong Chhnang	Rolea Prea	Rolea Prea	Trapaeng Trach	N12-08-14.16	E104-38-28.29	28	Sowing in June, harvesting 3 months after sowing; seeds are provided from other farmer; Used to make traditional rice cake "Kralan", and to produce bean sprouts.
2024 A06	293729	4-Dec	<i>Vigna radiata</i> (L.) Wilczek	San deak kheav	seed	landrace	farm store	Kampong Chhnang	Rolea Prea	Rolea Prea	Trapaeng Trach	N12-08-14.16	E104-38-28.29	28	Sowing in July, harvesting 4 months after sowing; seeds are provided from other farmer; Used to make traditional rice cake "Ansom"; mixed with No. 7; seeds are green color.
2024 A07	293730	4-Dec	<i>Vigna radiata</i> (L.) Wilczek	San deak krohom	seed	landrace	farm store	Kampong Chhnang	Rolea Prea	Rolea Prea	Trapaeng Trach	N12-08-14.16	E104-38-28.29	28	Sowing in July, harvesting 4 months after sowing; seeds are provided from other farmer; Used to make traditional rice cake "Ansom"; mixed with No. 6; seeds are yellow color.
2024 A08	293731	4-Dec	<i>Abelmoschus esculentus</i> (L.) Moench	Pot barang	seed	landrace	farm store	Kampong Chhnang	Rolea Prea	Rolea Prea	Trapaeng Trach	N12-08-14.16	E104-38-28.29	28	Sowing in June, harvesting in July; seeds are provided from other farmer; stir frying, making salad, and within fish sauce named "Terk Trey Koh Kong".
2024 A09	293732	5-Dec	<i>Luffa acutangula</i> Roxb.	Nor nong chrong	seed	landrace	farm store	Kampong Chhnang	Kampong Leng	Trangel	Trapaeng Meas	N12-17-28.10	E104-44-43.63	17	Sowing in May, harvesting in July; fruit length is 30 cm; width is 10 cm; making soup and stir frying.
2024 A10	293733	5-Dec	<i>Luffa cylindrica</i> M. Roem.	Nor nong shanh	seed	landrace	farm store	Kampong Chhnang	Kampong Leng	Trangel	Trapaeng Meas	N12-17-28.10	E104-44-43.63	17	Sowing in May, harvesting in August; fruit length is 50 cm; width is 10 cm; making soup and stir frying.
2024 A11	293734	5-Dec	<i>Benincasa hispida</i> Cogn.	Tro lach	vegetative	landrace	farm store	Kampong Chhnang	Kampong Leng	Trangel	Trapaeng Meas	N12-17-28.10	E104-44-43.63	17	Sowing in May, harvesting in August; making rice cake.
2024 A12	293735	5-Dec	<i>Vigna radiata</i> (L.) Wilczek	San deak preng	seed	landrace	farm store	Kampong Chhnang	Kampong Leng	Trangel	Trangel	N12-17-40.72	E104-43-42.08	12	Sowing in December, harvesting in April; keeping seed for 20 years; cultivate in lower area of island (flooded area); seeds are shiny green color; making porridge, rice cake and producing bean sprouts.
2024 A13	293736	5-Dec	<i>Vigna radiata</i> (L.) Wilczek	San deak loeung	seed	landrace	farm store	Kampong Chhnang	Kampong Leng	Trangel	Trangel	N12-17-40.72	E104-43-42.08	12	Sowing in December, harvesting in April; keeping seed for 20 years; cultivate in higher area of island (non flooded area) to increase yield; seeds are yellow color; making porridge, rice cake and producing bean sprouts.
2024 A14	293737	5-Dec	<i>Vigna unguiculata</i> (L.) Walpers cv-gr. Unguiculata E. Westphal	San deak angkuy	seed	landrace	farm store	Kampong Chhnang	Kampong Leng	Trangel	Trangel	N12-17-40.72	E104-43-42.08	12	Sowing in December, harvesting in April; making dessert and rice cake in this area.
2024 A15	293738	5-Dec	<i>Sesamum indicum</i> L.	Lgor kmau	seed	landrace	farm store	Kampong Chhnang	Kampong Leng	Trangel	Trangel	N12-17-40.72	E104-43-42.08	12	Sowing in December, harvesting in April; maintained the seeds for about 20 years; making rice cake; use the extracted oil as a muscle medicine.
2024 A16	293739	5-Dec	<i>Vigna radiata</i> (L.) Wilczek	San deak bay	seed	landrace	farm store	Kampong Chhnang	Kampong Leng	Trangel	Trangel	N12-17-40.72	E104-43-42.08	12	Sowing in December, harvesting in April; seeds are matte green color.
2024 A17	293740	5-Dec	<i>Solanum melongena</i> L.	Trob srouy	seed	landrace	farm store	Kampong Chhnang	Kampong Leng	Trangel	Trangel	N12-17-40.72	E104-43-42.08	12	Sowing in December, harvesting in March; making soup and sauce.
2024 A18	293741	5-Dec	<i>Ocimum basilicum</i> L.	Ji neang voang	both	landrace	farm land	Kampong Chhnang	Kampong Leng	Trangel	Trangel	N12-17-40.72	E104-43-42.08	12	Year-round cultivation; making soup, sauce and salad.
2024 A19	293742	5-Dec	<i>Vigna unguiculata</i> (L.) Walpers cv-gr. Unguiculata E. Westphal	San deak krohom	seed	landrace	farm store	Kampong Chhnang	Kampong Leng	Trangel	Trangel	N12-17-40.72	E104-43-42.08	12	Sowing in December, harvesting in April; making dessert.
2024 A20	293743	5-Dec	<i>Cucumis melo</i> L.	Trosok srov	seed	landrace	farm store	Kampong Chhnang	Kampong Leng	Trangel	Trangel	N12-17-40.72	E104-43-42.08	12	Year-round cultivation; fruit length is 30 cm; width is 10cm; fruit has white skin with yellow stripe, soft texture, not too sweet, and good smell; making dessert; cultivate in island area to increase yield.

Table 3. (Continued).

Coll. No.	JP No.	Coll. Date 2024	Species name	Local name	Type of sample	Status of sample	Coll. source	Province	District	Commune	Village name	Latitude	Longitude	Altitude (m)	Remarks
2024 A21	293744	5-Dec	<i>Vigna radiata</i> (L.) Wilczek	San deak loeung	seed	landrace	farm store	Kampong Chhnang	Kampong Leng	Trangel	Trangel	N12-18-03.11	E104-43-46.82	26	Sowing in December, harvesting in March; 20 years cultivation; making rice cake.
2024 A22	293745	5-Dec	<i>Ocimum tenuiflorum</i> L.	Ji m'reas prov	seed	landrace	farm land	Kampong Chhnang	Kampong Leng	Trangel	Trangel	N12-18-03.11	E104-43-46.82	26	Year-round cultivation; making soup and stir frying with meat.
2024 A23	293746	5-Dec	<i>Ocimum tenuiflorum</i> L.	Ji m'reas prov	both	landrace	farm land	Kampong Chhnang	Kampong Leng	Trangel	Klaeng Por	N12-16-45.11	E104-45-45.11	16	Year-round cultivation; making soup and stir frying.
2024 A24	293747	5-Dec	<i>Luffa cylindrica</i> M. Roem.	Nor nong proher	both	landrace	farm store	Kampong Chhnang	Kampong Leng	Trangel	Klaeng Por	N12-16-45.11	E104-45-45.11	16	Year-round cultivation; making soup, sauce and stir frying.
2024 A25	293748	5-Dec	<i>Cucumis sativus</i> L.	Trosok treung	seed	landrace	farm store	Kampong Chhnang	Kampong Leng	Trangel	Klaeng Por	N12-16-45.11	E104-45-45.11	16	Year-round sowing, harvesting 1 month after sowing.
2024 A26	293749	5-Dec	<i>Benincasa hispida</i> Cogn.	Tro lach	seed	landrace	farm store	Kampong Chhnang	Kampong Leng	Trangel	Klaeng Por	N12-16-45.11	E104-45-45.11	16	Sowing in December, harvesting in March; making soup and stir frying.
2024 A27	293750	5-Dec	<i>Ocimum basilicum</i> L.	Ji neang voang	both	landrace	farm land	Kampong Chhnang	Kampong Leng	Trangel	Klaeng Por	N12-16-45.11	E104-45-45.11	16	Year-round cultivation; making soup, and sauce.
2024 A28	293751	5-Dec	<i>Sesamum indicum</i> L.	Lgor kmau	seed	landrace	farm store	Kampong Chhnang	Kampong Leng	Trangel	Trobek	N12-18-10.06	E104-43-23.76	11	Year-round cultivation
2024 A29	293752	5-Dec	<i>Vigna unguiculata</i> (L.) Walpers cv-gr. Unguiculata E. Westphal	San deak angkuy sor	seed	landrace	farm store	Kampong Chhnang	Kampong Leng	Trangel	Trobek	N12-18-10.06	E104-43-23.76	11	Sowing time depends on water level of Tonle Sap river, harvesting 3.5 months after sowing; making dessert.
2024 A30	293753	5-Dec	<i>Vigna radiata</i> (L.) Wilczek	San deak preng	seed	landrace	farm store	Kampong Chhnang	Kampong Leng	Trangel	Trobek	N12-18-10.06	E104-43-23.76	11	Sowing time depends on Tonle Sap river water level, harvesting 2 months after sowing; making dessert; seeds are shiny green color.
2024 A31	293754	5-Dec	<i>Vigna radiata</i> (L.) Wilczek	San deak loeung	seed	landrace	farm store	Kampong Chhnang	Kampong Leng	Trangel	Trobek	N12-18-10.06	E104-43-23.76	11	Sowing in December, harvesting in March; making dessert and producing bean sprouts; cultivate in upland;
2024 A32	293755	5-Dec	<i>Vigna radiata</i> (L.) Wilczek	San deak bay	seed	landrace	farm store	Kampong Chhnang	Kampong Leng	Trangel	Trobek	N12-18-10.06	E104-43-23.76	11	Sowing time depends on Tonle Sap river water level, harvesting 2 months after sowing; making dessert; seeds are shiny green color.
2024 A33	293756	5-Dec	<i>Vigna unguiculata</i> (L.) Walpers cv-gr. Unguiculata E. Westphal	San deak krohoh	seed	landrace	farm store	Kampong Chhnang	Kampong Leng	Pou	Pou	N12-20-49.86	E104-42-40.93	20	Sowing in May, harvesting in July; making dessert.
2024 A34	293757	5-Dec	<i>Vigna radiata</i> (L.) Wilczek	San deak loeung	seed	landrace	farm store	Kampong Chhnang	Kampong Leng	Pou	Pou	N12-20-49.86	E104-42-40.93	20	Sowing in December, harvesting in May.
2024 A35	293758	5-Dec	<i>Luffa cylindrica</i> M. Roem.	Nor nong maet	seed	landrace	farm store	Kampong Chhnang	Kampong Leng	Pou	Pou	N12-21-05.19	E104-43-14.57	19	Sowing in January, harvesting in March; fruit length is 40 cm; width is 10 cm; seeds are black color; making soup, salad and stir frying.
2024 A36	293759	5-Dec	<i>Luffa cylindrica</i> M. Roem.	Nor nong maet	seed	landrace	farm store	Kampong Chhnang	Kampong Leng	Pou	Pou	N12-21-05.19	E104-43-14.57	19	Sowing in January, harvesting in March; seeds are white color; making soup, salad and stir frying.
2024 A37	293760	5-Dec	<i>Vigna unguiculata</i> (L.) Walpers cv-gr. Unguiculata E. Westphal	San deak angkuy	seed	landrace	farm store	Kampong Chhnang	Kampong Leng	Kampons Hav	Tur Rolom	N12-17-10.24	E104-41-50.19	13	Sowing in December, harvesting in March-April; making cake and sweet porridge.
2024 A38	293761	5-Dec	<i>Sesamum indicum</i> L.	Lgor kmau	seed	landrace	farm store	Kampong Chhnang	Kampong Leng	Kampons Hav	Tur Rolom	N12-17-10.24	E104-41-50.19	13	Year-round sowing, harvesting in depend on flood level; making rice cake, eaten with desserts.
2024 A39	293762	5-Dec	<i>Vigna radiata</i> (L.) Wilczek	San deak bay	seed	landrace	farm store	Kampong Chhnang	Kampong Leng	Kampons Hav	Tur Rolom	N12-17-10.24	E104-41-50.19	13	Sowing in December, harvesting in April; making dessert and producing bean sprouts.
2024 A40	293763	5-Dec	<i>Cucurbita moschata</i> Duch.	Lpov thai	seed	landrace	farm store	Kampong Chhnang	Kampong Leng	Kampons Hav	Tur Rolom	N12-17-10.24	E104-41-50.19	13	Sowing in December, harvesting in April (immature fruit), June (mature fruit); fruit length is 15 cm; width is 40 cm; the farmer got seed on the market in 2023; making dessert and soup.
2024 A41	293764	5-Dec	<i>Vigna radiata</i> (L.) Wilczek	San deak loeung	seed	landrace	farm store	Kampong Chhnang	Kampong Leng	Kampons Hav	Tur Rolom	N12-17-10.24	E104-41-50.19	13	Sowing in December and May, harvesting in April and September, respectively; making dessert.
2024 A42	293765	5-Dec	<i>Vigna unguiculata</i> (L.) Walpers cv-gr. Sesquipedalis E. Westphal	San deak treung	seed	landrace	farm store	Kampong Chhnang	Kampong Leng	Kampons Hav	Tur Rolom	N12-17-10.24	E104-41-50.19	13	Sowing in December and May, harvesting in April and September, respectively; making curry, soup, salad and stir frying.
2024 A43	293766	5-Dec	<i>Cucumis melo</i> L.	Trosok pa'eam	seed	landrace	farm store	Kampong Chhnang	Kampong Leng	Kampons Hav	Tur Rolom	N12-17-10.24	E104-41-50.19	13	Sowing in December and May, harvesting in April and September, respectively; fruit is round shape; fruit tastes sweeter than the other cultivars; making dessert.

Table 3. (Continued).

Coll. No.	JP No.	Coll. Date 2024	Species name	Local name	Type of sample	Status of sample	Coll. source	Province	District	Commune	Village name	Latitude	Longitude	Altitude (m)	Remarks
2024 A44	293767	5-Dec	<i>Cucumis melo</i> L.	Trosok srov	seed	landrace	farm store	Kampong Chhnang	Kampong Leng	Kampons Hav	Tur Rolom	N12-17-10.24	E104-41-50.19	13	Sowing in December and May, harvesting in March and August, respectively; fruit has yellow stripe skin and is large; making dessert.
2024 A45	293768	5-Dec	<i>Vigna radiata</i> (L.) Wilczek	San deak preng	seed	landrace	farm store	Kampong Chhnang	Kampong Leng	Kampons Hav	Tur Rolom	N12-17-10.24	E104-41-50.19	13	Sowing in December and May, harvesting in April and September, respectively; making dessert.
2024 A46	293769	6-Dec	<i>Cucumis melo</i> L.	Trosok srov	seed	landrace	farm store	Kampong Thom	Santuk	Tbong Kroper	Panha Ji	N12-40-02.58	E104-56-42.62	25	Sowing in May, harvesting in July; fruit has white skin with green stripe and is cylindrical; fruit is a little sweeter than the other cultivars.
2024 A47	293770	6-Dec	<i>Luffa cylindrica</i> M. Roem.	Nor nong moul	seed	landrace	farm store	Kampong Thom	Santuk	Tbong Kroper	Panha Ji	N12-40-02.58	E104-56-42.62	25	Sowing in May, harvesting in July (1.5 months after sowing); making soup and salad; seeds are black color.
2024 A48	293771	6-Dec	<i>Luffa cylindrica</i> M. Roem.	Nor nong moul	seed	landrace	farm store	Kampong Thom	Santuk	Tbong Kroper	Panha Ji	N12-40-02.58	E104-56-42.62	25	Sowing in May, harvesting in July (1.5 months after sowing); making soup and salad; seeds are white color.
2024 A49	293772	6-Dec	<i>Cucumis melo</i> L.	Trosok srov	seed	landrace	farm store	Kampong Thom	Santuk	Tbong Kroper	Ampous	N12-40-42.26	E104-57-04.27	23	Sowing in December; fruit has white skin with light green stripe and cylindrical shape; fruit tastes sweeter than the other cultivars; eaten with milk and sugar.
2024 A50	293773	6-Dec	<i>Cucurbita moschata</i> Duch.	Lpov	seed	landrace	farm store	Kampong Thom	Santuk	Tbong Kroper	Ampous	N12-40-42.26	E104-57-04.27	23	Sowing in December; fruit length 10 cm, width 50 cm; fruit has sticky texture; making soup.
2024 A51	293774	6-Dec	<i>Lagenaria siceraria</i> (Molina) Standl. var. <i>siceraria</i>	Khlok	seed	landrace	farm store	Kampong Thom	Santuk	Tbong Kroper	Ampous	N12-40-42.26	E104-57-04.27	23	Sowing in December, harvest month is unknown; making soup and stir frying; fruit is cylindrical shape.
2024 A52	293775	6-Dec	<i>Vigna unguiculata</i> (L.) Walpers cv-gr. <i>Unguiculata</i> E. Westphal	San deak ta aoum	seed	landrace	farm store	Kampong Thom	Santuk	Tbong Kroper	Ampous	N12-40-42.26	E104-57-04.27	23	Sowing in May, harvest month is unknown; making rice cake; pod length is 20 cm.
2024 A53	293776	6-Dec	<i>Psophocarpus tetragonolobus</i> (L.) DC.	San deak por peay	seed	landrace	farm store	Kampong Thom	Santuk	Tbong Kroper	Ampous	N12-40-42.26	E104-57-04.27	23	Year-round cultivation; making salad and stir frying.
2024 A54	293777	6-Dec	<i>Luffa cylindrica</i> M. Roem.	Nor nong moul	seed	landrace	farm store	Kampong Thom	Santuk	Tbong Kroper	Ampous	N12-40-42.26	E104-57-04.27	23	Year-round cultivation; making soup and stir frying.
2024 A55	293778	6-Dec	<i>Vigna radiata</i> (L.) Wilczek	San deak bay	seed	landrace	farm store	Kampong Thom	Santuk	Tbong Kroper	Ampous	N12-40-42.26	E104-57-04.27	23	Sowing in December, harvest month is unknown; seeds are green color; making rice cake.
2024 A56	293779	6-Dec	<i>Vigna unguiculata</i> (L.) Walpers cv-gr. <i>Unguiculata</i> E. Westphal	San deak angkuy krohom	seed	landrace	farm store	Kampong Thom	Santuk	Tbong Kroper	Ampous	N12-40-42.26	E104-57-04.27	23	Sowing in December, harvest month is unknown; seeds are red color; making rice cake.
2024 A57	293780	6-Dec	<i>Cucumis melo</i> L.	Trosok srov	seed	landrace	farm store	Kampong Thom	Santuk	Tbong Kroper	Ampous	N12-41-09.40	E104-57-31.12	25	Sowing in December, harvesting in March; mix with No. 58; fruit has white skin with light green stripe; fruit is football shape and powdery texture; fruit is not sweet; eaten with milk and sugar.
2024 A58	293781	6-Dec	<i>Cucumis melo</i> L.	Trosok srov	seed	landrace	farm store	Kampong Thom	Santuk	Tbong Kroper	Ampous	N12-41-09.40	E104-57-31.12	25	Sowing in December, harvesting in March; mix with No. 57; fruit is elliptic shape; flesh thickness is greater than that of other cultivar; fruit is not sweet; eaten with milk and sugar.
2024 A59	293782	6-Dec	<i>Luffa cylindrica</i> M. Roem.	Nor nong kroob	both	landrace	farm store	Kampong Thom	Santuk	Tbong Kroper	Ampous	N12-41-09.40	E104-57-31.12	25	Sowing in December, harvesting in March; making soup and stir frying.
2024 A60	293783	7-Dec	<i>Benincasa hispida</i> Cogn.	Tro lach	seed	landrace	farm store	Kampong Thom	Kampong svay	Tbaeng	Prey bros	N12-47-28.02	E104-48-50.68	22	Sowing in December, harvesting in January (1.5 months after sowing); making soup and salad.
2024 A61	293784	7-Dec	<i>Luffa cylindrica</i> M. Roem.	Nor nong proher	seed	landrace	farm store	Kampong Thom	Kampong svay	Tbaeng	Prey bros	N12-47-28.02	E104-48-50.68	22	Year-round cultivation; making soup and salad; fruit smells good.
2024 A62	293785	7-Dec	<i>Cucumis melo</i> L.	Trosok srov	vegetative	landrace	farm store	Kampong Thom	Kampong svay	Tbaeng	Prey bros	N12-47-28.02	E104-48-50.68	22	Sowing in December, harvesting in February; fruit length is 21 cm; width is 8 cm; fruit has yellow skin with green stripe; immature fruit has bitterness; making dessert (with milk and sugar).
2024 A63	293786	7-Dec	<i>Cucumis melo</i> L.	Trosok srov	vegetative	landrace	farm land	Kampong Thom	Kampong svay	Tbaeng	Prey bros	N12-47-28.02	E104-48-50.68	22	Sowing in December, harvesting in February; fruit length is 30 cm; width is 10 cm; fruit has green skin with white stripe; fruit smells good.
2024 A64	293787	7-Dec	<i>Cucumis melo</i> L.	Trosok srov	seed	landrace	farm store	Kampong Thom	Kampong svay	Tbaeng	Trach	N12-48-17.14	E104-47-28.09	17	Sowing in December, harvesting in January; making pickle, salad and dessert.
2024 A65	293788	7-Dec	<i>Benincasa hispida</i> Cogn.	Tro lach srov	seed	landrace	farm store	Kampong Thom	Kampong svay	Tbaeng	Trach	N12-48-17.14	E104-47-28.09	17	Sowing in December, harvesting in February; making soup and stir frying; the farmer sell it at a market; seeds and fruit are smaller than No. 66.

Table 3. (Continued).

Coll. No.	JP No.	Coll. Date 2024	Species name	Local name	Type of sample	Status of sample	Coll. source	Province	District	Commune	Village name	Latitude	Longitude	Altitude (m)	Remarks
2024 A66	293789	7-Dec	<i>Benincasa hispida</i> Cogn.	Tro lach krobei	seed	landrace	farm store	Kampong Thom	Kampong svay	Tbaeng	Trach	N12-48-17.14	E104-47-28.09	17	Sowing in December, harvesting in February; making soup and stir frying; the farmer sell it at a market; seeds and fruit are bigger than No. 65.
2024 A67	293790	7-Dec	<i>Luffa cylindrica</i> M. Roem.	Nor nong proher	seed	landrace	farm store	Kampong Thom	Kampong svay	Tbaeng	Trach	N12-48-17.14	E104-47-28.09	17	Sowing in December, harvesting in February; making soup, salad and stir frying.
2024 A68	293791	7-Dec	<i>Vigna unguiculata</i> (L.) Walpers cv-gr. Unguiculata E. Westphal	San deak angkuy	seed	landrace	farm store	Kampong Thom	Kampong svay	Tbaeng	Trach	N12-48-17.14	E104-47-28.09	17	Sowing in December, harvesting in February; pod is used in salad and bean is used in rice cake.
2024 A69	293792	7-Dec	<i>Cucumis melo</i> L.	Trosok srov	seed	landrace	farm store	Kampong Thom	Kampong svay	Tbaeng	Trach	N12-48-17.14	E104-47-28.09	17	Sowing in December, harvesting in February.
2024 A70	293793	7-Dec	<i>Cucumis melo</i> L.	Trosok srov	seed	landrace	farm store	Kampong Thom	Kampong svay	Tbaeng	Srongae	N12-48-46.68	E104-47-32.90	19	Sowing in April, harvesting in June; dessert is made from mature fruit and salad is made from immature fruit ; fruit tastes sweeter than the other cultivars.
2024 A71	293794	7-Dec	<i>Luffa cylindrica</i> M. Roem.	Nor nong sral	both	landrace	farm land	Kampong Thom	Kampong svay	Tbaeng	Srongae	N12-48-46.68	E104-47-32.90	19	Year-round sowing, harvesting 2 months after pollination; making soup, and stir frying.
2024 A72	293795	7-Dec	<i>Benincasa hispida</i> Cogn.	Tro lach preng	vegetative	landrace	farm land	Kampong Thom	Kampong svay	Tbaeng	Srongae	N12-48-46.68	E104-47-32.90	19	Year-round sowing, harvesting 2 months after pollination; making soup, sweet candy and stir frying.
2024 A73	293796	7-Dec	<i>Benincasa hispida</i> Cogn.	Tro lach srov	vegetative	landrace	farm land	Kampong Thom	Kampong svay	Tbaeng	Srongae	N12-48-46.68	E104-47-32.90	19	Year-round sowing, harvesting 2 months after pollination; making soup, sweet candy, salad and stir frying; (there's a superstition that sowing on Saturdays leads to better yields).
2024 A74	293797	7-Dec	<i>Vigna unguiculata</i> (L.) Walpers cv-gr. Sesquipedalis E. Westphal	San deak kur	seed	landrace	farm land	Kampong Thom	Kampong svay	Tbaeng	Srongae	N12-48-46.68	E104-47-32.90	19	Year-round cultivation; making rice cake.
2024 A75	293798	7-Dec	<i>Solanum melongena</i> L.	Trob srouy	vegetative	landrace	farm store	Kampong Thom	Kampong svay	Tbaeng	Srongae	N12-48-46.68	E104-47-32.90	19	Year-round cultivation; making rice cake; immature fruit is green and white color; mature fruit is yellow color; making curry, soup and salad.
2024 A76	293799	7-Dec	<i>Luffa cylindrica</i> M. Roem.	Nor nong proher	vegetative	landrace	farm store	Kampong Thom	Kampong svay	Tbaeng	Srongae	N12-48-46.68	E104-47-32.90	19	Year-round cultivation; making soup, salad and stir frying.
2024 A77	293800	7-Dec	<i>Cucumis sativus</i> L.	Trosok treung	seed	landrace	farm store	Kampong Thom	Kampong svay	Tbaeng	Tbeang Kor	N12-48-31.83	E104-46-08.79	10	Sowing in December, harvesting 1 month and 10 days after sowing; making salad, pickle and stir frying.
2024 A78	293801	7-Dec	<i>Luffa cylindrica</i> M. Roem.	Nor nong proher	seed	landrace	farm store	Kampong Thom	Kampong svay	Tbaeng	Ou Ombeang	N12-49-30.95	E104-47-40.35	23	Year-round sowing, harvesting 1.5 months after sowing; making soup, salad and stir frying; it has been cultivated for a long time.
2024 A79	293802	7-Dec	<i>Cucumis melo</i> L.	Trosok srov	seed	landrace	farm store	Kampong Thom	Kampong svay	Tbaeng	Ou Ombeang	N12-49-30.95	E104-47-40.35	23	Sowing in June, harvesting in August; fruit is less sweet; pickle is made from immature fruit and dessert is made from mature fruit.
2024 A80	293803	7-Dec	<i>Cucumis melo</i> L.	Trosok pa'eam	seed	landrace	farm store	Kampong Thom	Kampong svay	Tbaeng	Ou Ombeang	N12-49-30.95	E104-47-40.35	23	Sowing in June, harvesting in August; making dessert; mature fruit is sweet, but immature fruit has bitterness.
2024 A81	293804	7-Dec	<i>Vigna unguiculata</i> (L.) Walpers cv-gr. Unguiculata E. Westphal	San deak dom bok	both	landrace	farm store	Kampong Thom	Kampong svay	Tbaeng	Ou Ombeang	N12-49-30.95	E104-47-40.35	23	Sowing in June, harvesting in September; seeds are black color; making rice cake.
2024 A82	293805	7-Dec	<i>Vigna unguiculata</i> (L.) Walpers cv-gr. Unguiculata E. Westphal	San deak dom bok	both	landrace	farm store	Kampong Thom	Kampong svay	Tbaeng	Ou Ombeang	N12-49-30.95	E104-47-40.35	23	Sowing in June, harvesting in September; seeds are red color; making rice cake.
2024 A83	293806	7-Dec	<i>Vigna unguiculata</i> (L.) Walpers cv-gr. Sesquipedalis E. Westphal	San deak kur	seed	landrace	farm store	Kampong Thom	Kampong svay	Tbaeng	Ou Ombeang	N12-49-30.95	E104-47-40.35	23	Sowing in June, harvesting in August; making salad and stir frying.
2024 A84	293807	7-Dec	<i>Sesamum indicum</i> L.	Lgor kmau	seed	landrace	farm store	Kampong Thom	Kampong svay	Tbaeng	Ou Ombeang	N12-49-30.95	E104-47-40.35	23	Sowing in July, harvesting in October; making cake and soup.
2024 A85	293808	7-Dec	<i>Lagenaria siceraria</i> (Molina) Standl. var. <i>siceraria</i>	Khlok	seed	landrace	farm store	Kampong Thom	Kampong svay	Tbaeng	Ou Ombeang	N12-49-30.95	E104-47-40.35	23	Year-round sowing, harvesting 3 months after pollination; making soup, salad and stir frying.
2024 A86	293809	7-Dec	<i>Zea mays</i> L.	Pot domnerb	both	landrace	farm store	Kampong Thom	Kampong svay	Tbaeng	Ou Ombeang	N12-49-30.95	E104-47-40.35	23	Year-round sowing, harvesting 3 months after pollination; salad is made from immature fruit; mature fruit is boiled.
2024 A87	293810	7-Dec	<i>Abelmoschus esculentus</i> (L.) Moench	Pot barang	both	landrace	farm store	Kampong Thom	Kampong svay	Tbaeng	Ou Ombeang	N12-49-30.95	E104-47-40.35	23	Sowing in May, harvesting in September; making soup, salad and stir frying; put in the noodles.

Table 3. (Continued).

Coll. No.	JP No.	Coll. Date 2024	Species name	Local name	Type of sample	Status of sample	Coll. source	Province	District	Commune	Village name	Latitude	Longitude	Altitude (m)	Remarks
2024 A88	293811	7-Dec	<i>Solanum melongena</i> L.	Trob srouy	both	landrace	farm store	Kampong Thom	Kampong svay	Tbaeng	Ou Ombeang	N12-49-30.95	E104-47-40.35	23	Year-round sowing, harvesting 2 months after sowing; fruit has white and green color skin; making soup, salad and grilled with fish
2024 A89	293812	7-Dec	<i>Solanum melongena</i> L.	Trob kram	seed	landrace	farm store	Kampong Thom	Kampong svay	Tbaeng	Ou Ombeang	N12-49-30.95	E104-47-40.35	23	Year-round sowing, harvesting 2 months after sowing; making soup, salad and grilled with fish.
2024 A90	293813	7-Dec	<i>Benincasa hispida</i> Cogn.	Tro lach krobei	vegetative	landrace	farm store	Kampong Thom	Kampong svay	Tbaeng	Ou Ombeang	N12-49-30.95	E104-47-40.35	23	Year-round sowing, harvesting 2.5 months after sowing; making soup, sweet candy and stir frying.
2024 A91	293814	7-Dec	<i>Benincasa hispida</i> Cogn.	Tro lach srov	vegetative	landrace	farm store	Kampong Thom	Kampong svay	Tbaeng	Ou Ombeang	N12-49-30.95	E104-47-40.35	23	Year-round sowing, harvesting 2.5 months after sowing; making soup, sweet candy and stir frying; fruit is mealier and sweeter than the No. 90.
2024 A92	293815	7-Dec	<i>Cucurbita moschata</i> Duch.	Lpov tru	vegetative	landrace	farm store	Kampong Thom	Kampong svay	Tbaeng	Ou Ombeang	N12-49-30.95	E104-47-40.35	23	Sowing in July, harvesting in October; making soup and dessert; fruit has a mealy texture and fruit tastes sweeter than the other cultivars.
2024 A93	293816	8-Dec	<i>Luffa cylindrica</i> M. Roem.	Nor nong sor	seed	landrace	farm store	Kampong Cham	Chamkar Leu	Chey yor	Chey yor	N12-18-38.58	E105-20-36.95	49	Sowing in March, harvesting 1.5 months after sowing; fruit color is white; fruit has no aroma; making soup, salad and stir frying.
2024 A94	293817	8-Dec	<i>Cucurbita moschata</i> Duch.	Lpov kantol	seed	landrace	farm store	Kampong Cham	Chamkar Leu	Chey yor	Chey yor	N12-18-38.58	E105-20-36.95	49	Sowing in May, harvesting in July; fruit length is 510 cm; width is 20-30 cm; fruit is not too sweet and has a mealy texture; making soup.
2024 A95	293818	8-Dec	<i>Benincasa hispida</i> Cogn.	Tro lach chen	seed	landrace	farm store	Kampong Cham	Chamkar Leu	Chey yor	Chey yor	N12-18-38.58	E105-20-36.95	49	Sowing in March, harvesting in May; fruit length is 20 cm; width is 5 cm; making soup, salad and stir frying; fruit has light green skin.
2024 A96	293819	8-Dec	<i>Benincasa hispida</i> Cogn.	Tro lach sor	seed	landrace	farm store	Kampong Cham	Chamkar Leu	Chey yor	Chey yor	N12-18-38.58	E105-20-36.95	49	Sowing in March, harvesting in May; making soup, salad and stir frying; fruit has green skin.
2024 A97	293820	8-Dec	<i>Abelmoschus esculentus</i> (L.) Moench	Pot barang	seed	landrace	farm store	Kampong Cham	Chamkar Leu	Chey yor	Chey yor	N12-18-38.58	E105-20-36.95	49	Year-round cultivation; making salad and grilling.
2024 A98	293821	8-Dec	<i>Benincasa hispida</i> Cogn.	Tro lach srov	vegetative	landrace	farm store	Kampong Cham	Chamkar Leu	Chey yor	Chey yor	N12-18-38.58	E105-20-36.95	49	Sowing in March, harvesting in May; making soup, stir frying with meat.
2024 A99	293822	8-Dec	<i>Cucumis melo</i> L.	Trosok srov	seed	landrace	farm store	Kampong Cham	Steung Trang	Sopheas	Sopheas	N12-16-88.88	E105-15-17.77	54	Sowing in June, harvesting in September; fruit is ellipse shape and sweeter than the other cultivars; mature fruit has white skin; making dessert.
2024 A100	293823	8-Dec	<i>Cucumis melo</i> L.	Trosok srov	seed	landrace	farm store	Kampong Cham	Steung Trang	Sopheas	Sopheas	N12-16-88.88	E105-15-17.77	54	Sowing in June, harvesting in September; fruit is longer than the No. 99; immature fruits are green and turn white when they ripen.; fruit has a soft texture; making dessert.
2024 A101	293824	8-Dec	<i>Lagenaria siceraria</i> (Molina) Standl. var. <i>siceraria</i>	Khlok	seed	cultivar (bred)	farm store	Kampong Cham	Steung Trang	Sopheas	Sopheas	N12-16-88.88	E105-15-17.77	54	Sowing in June, harvesting in September; making soup only.
2024 A102	293825	8-Dec	<i>Luffa cylindrica</i> M. Roem.	Nor nong moul	seed	cultivar (bred)	farm store	Kampong Cham	Steung Trang	Sopheas	Sopheas	N12-16-88.88	E105-15-17.77	54	Year-round sowing, harvesting 3 months after sowing; making soup, salad and stir frying.
2024 A103	293826	8-Dec	<i>Vigna unguiculata</i> (L.) Walpers cv-gr. <i>Sesquipedalis</i> E. Westphal	San deak kur	seed	landrace	farm store	Kampong Cham	Steung Trang	Sopheas	Sopheas	N12-16-88.88	E105-15-17.77	54	Year-round sowing, harvesting 1 month after sowing; making soup, salad and stir frying.
2024 A104	293827	8-Dec	<i>Benincasa hispida</i> Cogn.	Tro lach sor	seed	landrace	farm store	Kampong Cham	Steung Trang	Sopheas	Sopheas	N12-16-88.88	E105-15-17.77	54	Sowing in May, harvesting in August; making soup, candy and stir frying.
2024 A105	293828	8-Dec	<i>Cucumis melo</i> L.	Trosok srov	vegetative	landrace	village market	Kampong Cham	Kampong Siam	Ro'ang Krom	Ro'ang Krom	N12-02-14.56	E105-28-42.04	26	The seller bought it from a nearby village seem like a flooded farm area named "Koh dach".

Photos of collected samples



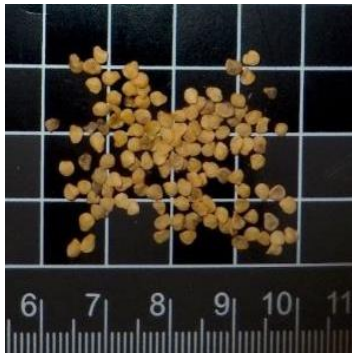
Sample Photo 1.
JP293724 (2024A01),
Cucumis sativus



Sample Photo 2.
JP293725 (2024A02),
Cucurbita moschata



Sample Photo 3.
JP293726 (2024A03),
Luffa acutangula



Sample Photo 4.
JP293727 (2024A04),
Solanum melongena



Sample Photo 5.
JP293728 (2024A05),
Vigna unguiculata cv-gr. Unguiculata



Sample Photo 6.
JP293729 (2024A06),
Vigna radiata



Sample Photo 7.
JP293730 (2024A07),
Vigna radiata



Sample Photo 8.
JP293731 (2024A08),
Abelmoschus esculentus



Sample Photo 9A.
JP293732 (2024A09; fruit),
Luffa acutangula



Sample Photo 9B.
JP293732 (2024A09; seeds),
Luffa acutangula



Sample Photo 10A.
JP293733 (2024A10; fruit),
Luffa cylindrica



Sample Photo 10B.
JP293733 (2024A10; seeds),
Luffa cylindrica

Photos of collected samples



Sample Photo 11A.
JP293734 (2024A11; fruit),
Benincasa hispida



Sample Photo 11B.
JP293734 (2024A11; seeds),
Benincasa hispida



Sample Photo 12.
JP293735 (2024A12),
Vigna radiata



Sample Photo 13.
JP293736 (2024A13),
Vigna radiata



Sample Photo 14.
JP293737 (2024A14),
Vigna unguiculata cv-gr. Unguiculata



Sample Photo 15.
JP293738 (2024A15),
Sesamum indicum



Sample Photo 16.
JP293739 (2024A16),
Vigna radiata



Sample Photo 17.
JP293740 (2024A17),
Solanum melongena



Sample Photo 18A.
JP293741 (2024A18; flowers),
Ocimum basilicum



Sample Photo 18B.
JP293741 (2024A18; seeds),
Ocimum basilicum



Sample Photo 19.
JP293742 (2024A19),
Vigna unguiculata cv-gr. Unguiculata



Sample Photo 20.
JP293743 (2024A20),
Cucumis melo

Photos of collected samples



Sample Photo 21.
JP293744 (2024A21),
Vigna radiata



Sample Photo 22A.
JP293745 (2024A22; flowers),
Ocimum tenuiflorum



Sample Photo 22B.
JP293745 (2024A22; seeds),
Ocimum tenuiflorum



Sample Photo 23A.
JP293746 (2024A23; flowers),
Ocimum tenuiflorum



Sample Photo 23B.
JP293746 (2024A23; seeds),
Ocimum tenuiflorum



Sample Photo 24.
JP293747 (2024A24),
Luffa cylindrica



Sample Photo 25.
JP293748 (2024A25),
Cucumis sativus



Sample Photo 26.
JP293749 (2024A26),
Benincasa hispida



Sample Photo 27A.
JP293750 (2024A27; flowers),
Ocimum basilicum



Sample Photo 27B.
JP293750 (2024A27; seeds),
Ocimum basilicum



Sample Photo 28.
JP293751 (2024A28),
Sesamum indicum



Sample Photo 29.
JP293752 (2024A29),
Vigna unguiculata cv-gr. Unguiculata

Photos of collected samples



Sample Photo 30.
JP293753 (2024A30),
Vigna radiata



Sample Photo 31.
JP293754 (2024A31),
Vigna radiata



Sample Photo 32.
JP293755 (2024A32),
Vigna radiata



Sample Photo 33.
JP293756 (2024A33),
Vigna unguiculata cv-gr. Unguiculata



Sample Photo 34.
JP293757 (2024A34),
Vigna radiata



Sample Photo 35.
JP293758 (2024A35),
Luffa cylindrica



Sample Photo 36.
JP293759 (2024A36),
Luffa cylindrica



Sample Photo 37.
JP293760 (2024A37),
Vigna unguiculata cv-gr. Unguiculata



Sample Photo 38.
JP293761 (2024A38),
Sesamum indicum



Sample Photo 39.
JP293762 (2024A39),
Vigna radiata



Sample Photo 40.
JP293763 (2024A40),
Cucurbita moschata



Sample Photo 41.
JP293764 (2024A41),
Vigna radiata

Photos of collected samples



Sample Photo 42.
JP293765 (2024A42),
Vigna unguiculata cv-gr. *Sesquipedalis*



Sample Photo 43.
JP293766 (2024A43),
Cucumis melo



Sample Photo 44.
JP293767 (2024A44),
Cucumis melo



Sample Photo 45.
JP293768 (2024A45),
Vigna radiata



Sample Photo 46.
JP293769 (2024A46),
Cucumis melo



Sample Photo 47.
JP293770 (2024A47),
Luffa cylindrica



Sample Photo 48.
JP293771 (2024A48),
Luffa cylindrica



Sample Photo 49.
JP293772 (2024A49),
Cucumis melo



Sample Photo 50.
JP293773 (2024A50),
Cucurbita moschata



Sample Photo 51.
JP293774 (2024A51),
Lagenaria siceraria



Sample Photo 52.
JP293775 (2024A52),
Vigna unguiculata cv-gr. *Unguiculata*



Sample Photo 53.
JP293776 (2024A53),
Psophocarpus tetragonolobus

Photos of collected samples



Sample Photo 54.
JP293777 (2024A54),
Luffa cylindrica



Sample Photo 55.
JP293778 (2024A55),
Vigna radiata



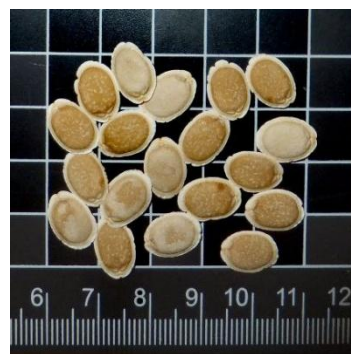
Sample Photo 56.
JP293779 (2024A56),
Vigna unguiculata cv-gr. Unguiculata



Sample Photo 57.
JP293780 (2024A57),
Cucumis melo



Sample Photo 58.
JP293781 (2024A58),
Cucumis melo



Sample Photo 59.
JP293782 (2024A59),
Luffa cylindrica



Sample Photo 60.
JP293783 (2024A60),
Benincasa hispida



Sample Photo 61A.
JP293784 (2024A61; fruit),
Luffa cylindrica



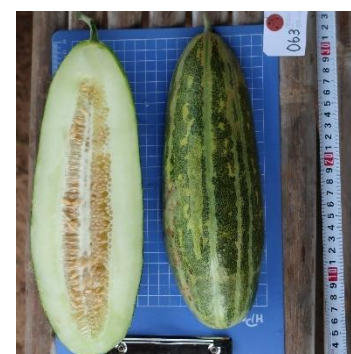
Sample Photo 61B.
JP293784 (2024A61; seeds),
Luffa cylindrica



Sample Photo 62A.
JP293785 (2024A62; fruit),
Cucumis melo



Sample Photo 62B.
JP293785 (2024A62; seeds),
Cucumis melo



Sample Photo 63A.
JP293786 (2024A63; fruit),
Cucumis melo

Photos of collected samples



Sample Photo 63B.
JP293786 (2024A63; seeds),
Cucumis melo



Sample Photo 64.
JP293787 (2024A64),
Cucumis melo



Sample Photo 65.
JP293788 (2024A65),
Benincasa hispida



Sample Photo 66.
JP293789 (2024A66),
Benincasa hispida



Sample Photo 67.
JP293790 (2024A67),
Luffa cylindrica



Sample Photo 68.
JP293791 (2024A68),
Vigna unguiculata cv-gr. *Unguiculata*



Sample Photo 69.
JP293792 (2024A69),
Cucumis melo



Sample Photo 70.
JP293793 (2024A70),
Cucumis melo



Sample Photo 71A.
JP293794 (2024A71; fruit),
Luffa cylindrica



Sample Photo 71B.
JP293794 (2024A71; seeds),
Luffa cylindrica



Sample Photo 72A.
JP293795 (2024A72; fruit),
Benincasa hispida



Sample Photo 72B.
JP293795 (2024A72; seeds),
Benincasa hispida

Photos of collected samples



Sample Photo 73A.
JP293796 (2024A73; fruit),
Benincasa hispida



Sample Photo 73B.
JP293796 (2024A73; seeds),
Benincasa hispida



Sample Photo 74.
JP293797 (2024A74),
Vigna unguiculata cv-gr. *Sesquipedalis*



Sample Photo 75A.
JP293798 (2024A75; fruit),
Solanum melongena



Sample Photo 75B.
JP293798 (2024A75; seeds),
Solanum melongena



Sample Photo 76.
JP293799 (2024A76),
Luffa cylindrica



Sample Photo 77.
JP293800 (2024A77),
Cucumis sativus



Sample Photo 78.
JP293801 (2024A78),
Luffa cylindrica



Sample Photo 79.
JP293802 (2024A79),
Cucumis melo



Sample Photo 80.
JP293803 (20234A80),
Cucumis melo



Sample Photo 81A.
JP293804 (2024A81; pods),
Vigna unguiculata cv-gr. *Unguiculata*



Sample Photo 81B.
JP293804 (2024A81; seeds),
Vigna unguiculata cv-gr. *Unguiculata*

Photos of collected samples



Sample Photo 82.
JP293805 (2024A82),
Vigna unguiculata cv-gr. *Unguiculata*



Sample Photo 83.
JP293806 (2024A83),
Vigna unguiculata cv-gr. *Sesquipedalis*



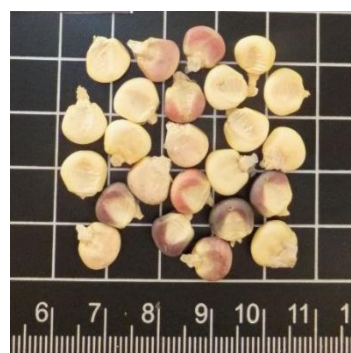
Sample Photo 84.
JP293807 (2024A84),
Sesamum indicum



Sample Photo 85.
JP293808 (2024A85),
Lagenaria siceraria



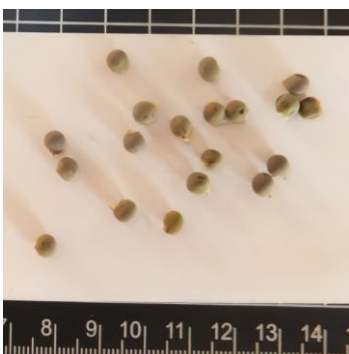
Sample Photo 86A.
JP293809 (2024A86; mature ear),
Zea mays



Sample Photo 86B.
JP293809 (2024A86; seeds),
Zea mays



Sample Photo 87A.
JP293810 (2024A87; fruits),
Abelmoschus esculentus



Sample Photo 87B.
JP293810 (2024A87; seeds),
Abelmoschus esculentus



Sample Photo 88.
JP293811 (2024A88),
Solanum melongena



Sample Photo 89.
JP293812 (2024A89),
Solanum melongena



Sample Photo 90A.
JP293813 (2024A90; fruit),
Benincasa hispida



Sample Photo 90B.
JP293813 (2024A90; seeds),
Benincasa hispida

Photos of collected samples



Sample Photo 91A.
JP293814 (2024A91; fruit),
Benincasa hispida



Sample Photo 91B.
JP293814 (2024A91; seeds),
Benincasa hispida



Sample Photo 92A.
JP293815 (2024A92; fruit),
Cucurbita moschata



Sample Photo 92B.
JP293815 (2024A92; seeds),
Cucurbita moschata



Sample Photo 93.
JP293816 (2024A93),
Luffa cylindrica



Sample Photo 94.
JP293817 (2024A94),
Cucurbita moschata



Sample Photo 95.
JP293818 (2024A95),
Benincasa hispida



Sample Photo 96.
JP293819 (2024A96),
Benincasa hispida



Sample Photo 97A.
JP293820 (2024A97; fruit),
Abelmoschus esculentus



Sample Photo 97B.
JP293820 (2024A97; seeds),
Abelmoschus esculentus



Sample Photo 98A.
JP293821 (2024A98; fruit),
Benincasa hispida



Sample Photo 98B.
JP293821 (2024A98; seeds),
Benincasa hispida

Photos of collected samples



Sample Photo 99.
JP293822 (2024A99),
Cucumis melo



Sample Photo 100.
JP293823 (2024A100),
Cucumis melo



Sample Photo 101.
JP293824 (2024A101),
Lagenaria siceraria



Sample Photo 102.
JP293825 (2024A102),
Luffa cylindrica



Sample Photo 103.
JP293826 (2024A103),
Vigna unguiculata cv-gr. *Sesquipedalis*



Sample Photo 104.
JP293827 (2024A104),
Benincasa hispida



Sample Photo 105A.
JP293828 (2024A105; fruit),
Cucumis melo



Sample Photo 105B.
JP293828 (2024A105; seed),
Cucumis melo