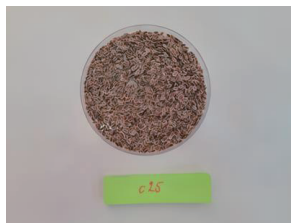
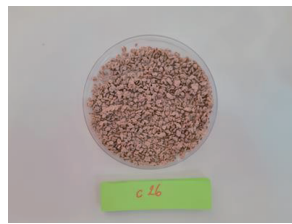


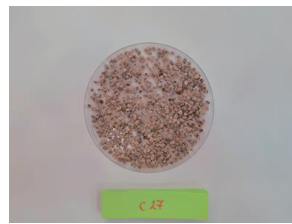
Photo 1. Seeds of each accession. The label in each image corresponds to the ID in Tables 2 and 3.



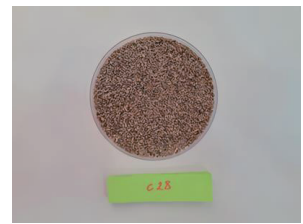
C025.  
JP289395,  
*Aneyhum graveolens*



C026.  
JP289396,  
*Solanum lycopersicum*



C027.  
JP289397,  
*Solanum lycopersicum*



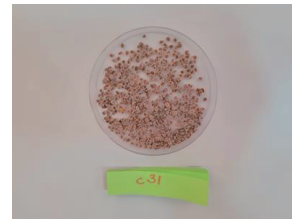
C028.  
JP289398,  
*Petroselinum crispum*



C029.  
JP289399,  
*Cucumis sativus*



C030.  
JP289400,  
*Cucurbita pepo*



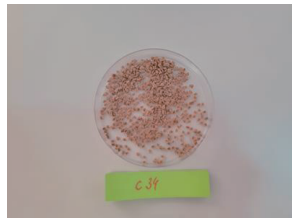
C031.  
JP289401,  
*Solanum lycopersicum*



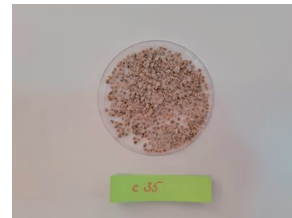
C032.  
JP289402,  
*Solanum lycopersicum*



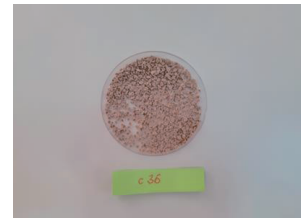
C033.  
JP289403,  
*Solanum lycopersicum*



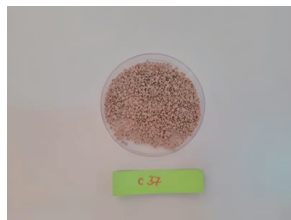
C034.  
JP289404,  
*Solanum lycopersicum*



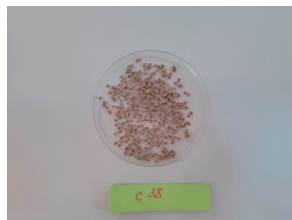
C035.  
JP289405,  
*Solanum lycopersicum*



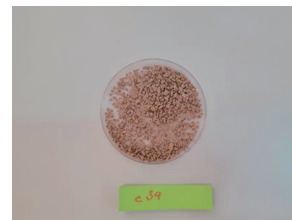
C036.  
JP289406,  
*Solanum lycopersicum*



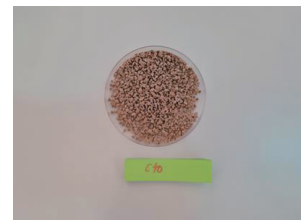
C037.  
JP289407,  
*Solanum lycopersicum*



C038.  
JP289408,  
*Solanum lycopersicum*



C039.  
JP289409,  
*Solanum lycopersicum*



C040.  
JP289410,  
*Solanum lycopersicum*



C041.  
JP289411,  
*Brassica oleracea*



C042.  
JP289412,  
*Cucumis sativus*



C043.  
JP289413,  
*Cucumis sativus*



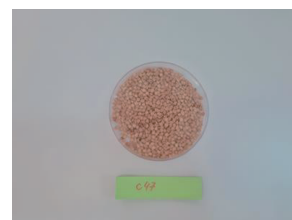
C044.  
JP289414,  
*Capsicum annuum*



C045.  
JP289415,  
*Capsicum annuum*



C046.  
JP289416,  
*Capsicum annuum*

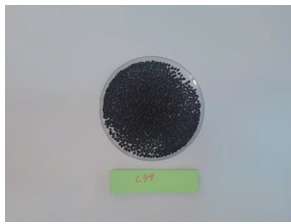


C047.  
JP289417,  
*Capsicum annuum*



C048.  
JP289418,  
*Allium cepa*

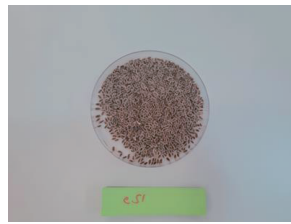
Photo 1. (Continued).



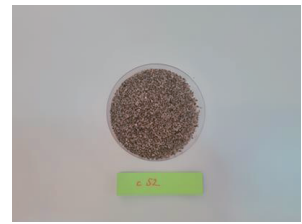
C049.  
JP289419,  
*Allium cepa*



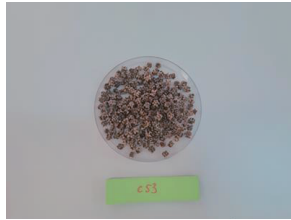
C050.  
JP289420,  
*Coriandrum sativum*



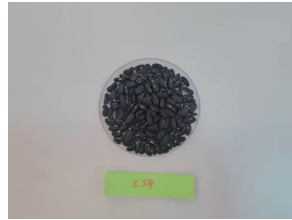
C051.  
JP289421,  
*Anethum graveolens*



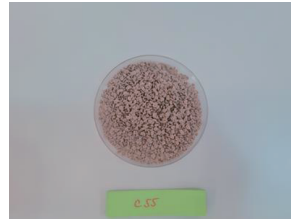
C052.  
JP289422,  
*Daucus carota*



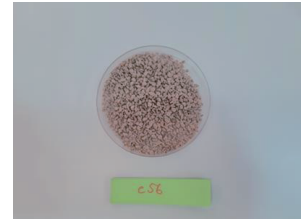
C053.  
JP289423,  
*Beta vulgaris*



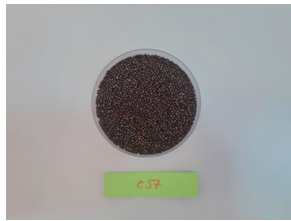
C054.  
JP289424,  
*Phaseolus vulgaris*



C055.  
JP289425,  
*Solanum lycopersicum*



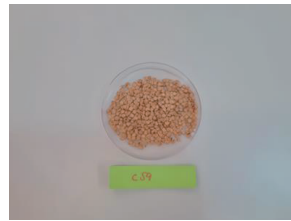
C056.  
JP289426,  
*Solanum lycopersicum*



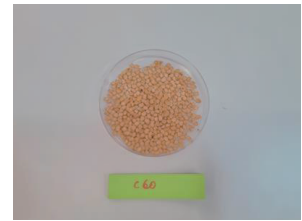
C057.  
JP289427,  
*Brassica oleracea*



C058.  
JP289428,  
*Cucumis sativus*



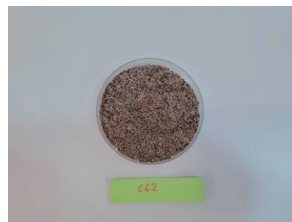
C059.  
JP289429,  
*Capsicum annuum*



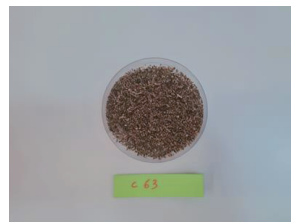
C060.  
JP289430,  
*Capsicum annuum*



C061.  
JP289431,  
*Anethum graveolens*



C062.  
JP289432,  
*Anethum graveolens*



C063.  
JP289433,  
*Daucus carota*



C064.  
JP289434,  
*Beta vulgaris*



C065.  
JP289435,  
*Phaseolus vulgaris*



C066.  
JP289436,  
*Phaseolus vulgaris*



C067.  
JP289437,  
*Solanum lycopersicum*



C068.  
JP289438,  
*Solanum lycopersicum*



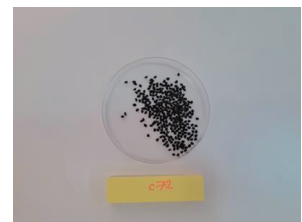
C069.  
JP289439,  
*Allium tuberosum*



C070.  
JP289440,  
*Allium cepa*

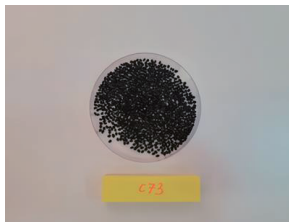


C071.  
JP289441,  
*Allium cepa*

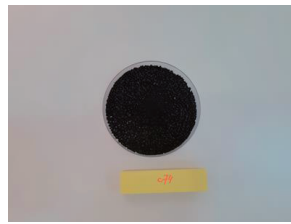


C072.  
JP289442,  
*Allium cepa*

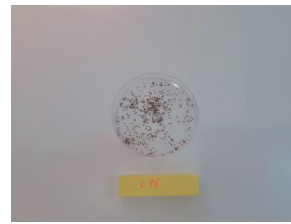
Photo 1. (Continued).



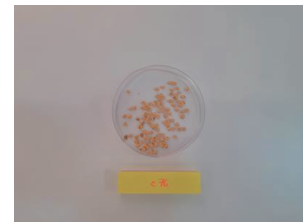
C073.  
JP289443,  
*Allium cepa*



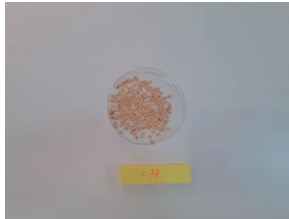
C074.  
JP289444,  
*Allium cepa*



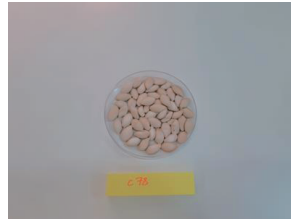
C075.  
JP289445,  
*Apium graveolens*



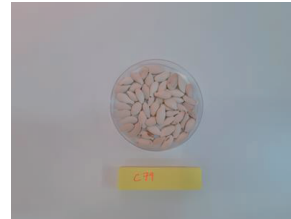
C076.  
JP289446,  
*Capsicum annuum*



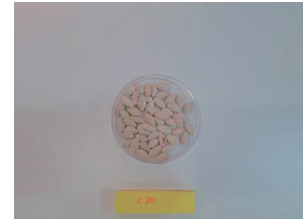
C077.  
JP289447,  
*Capsicum annuum*



C078.  
JP289448,  
*Cucurbita pepo*



C079.  
JP289449,  
*Cucurbita pepo*



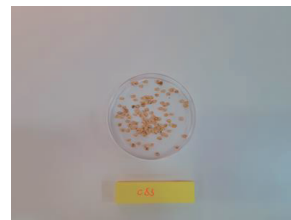
C080.  
JP289450,  
*Cucurbita pepo*



C081.  
JP289451,  
*Cucurbita pepo*



C082.  
JP289452,  
*Capsicum annuum*



C083.  
JP289453,  
*Cucurbita pepo*



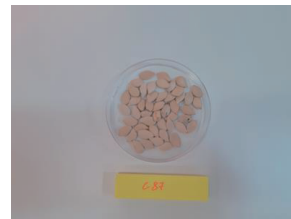
C084.  
JP289454,  
*Cucurbita pepo*



C085.  
JP289455,  
*Brassica oleracea*



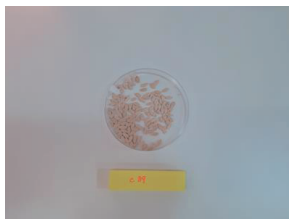
C086.  
JP289456,  
*Cucurbita pepo*



C087.  
JP289457,  
*Cucurbita pepo*



C088.  
JP289458,  
*Cucumis sativus*



C089.  
JP289459,  
*Cucumis sativus*



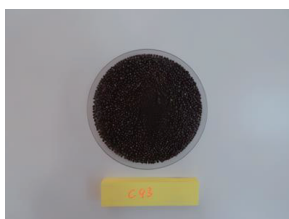
C090.  
JP289460,  
*Daucus carota*



C091.  
JP289461,  
*Solanum lycopersicum*



C092.  
JP289462,  
*Brassica oleracea*



C093.  
JP289463,  
*Brassica oleracea*



C094.  
JP289464,  
*Cucumis sativus*



C095.  
JP289465,  
*Cucumis sativus*



C096.  
JP289466,  
*Cucumis sativus*

Photo 1. (Continued).



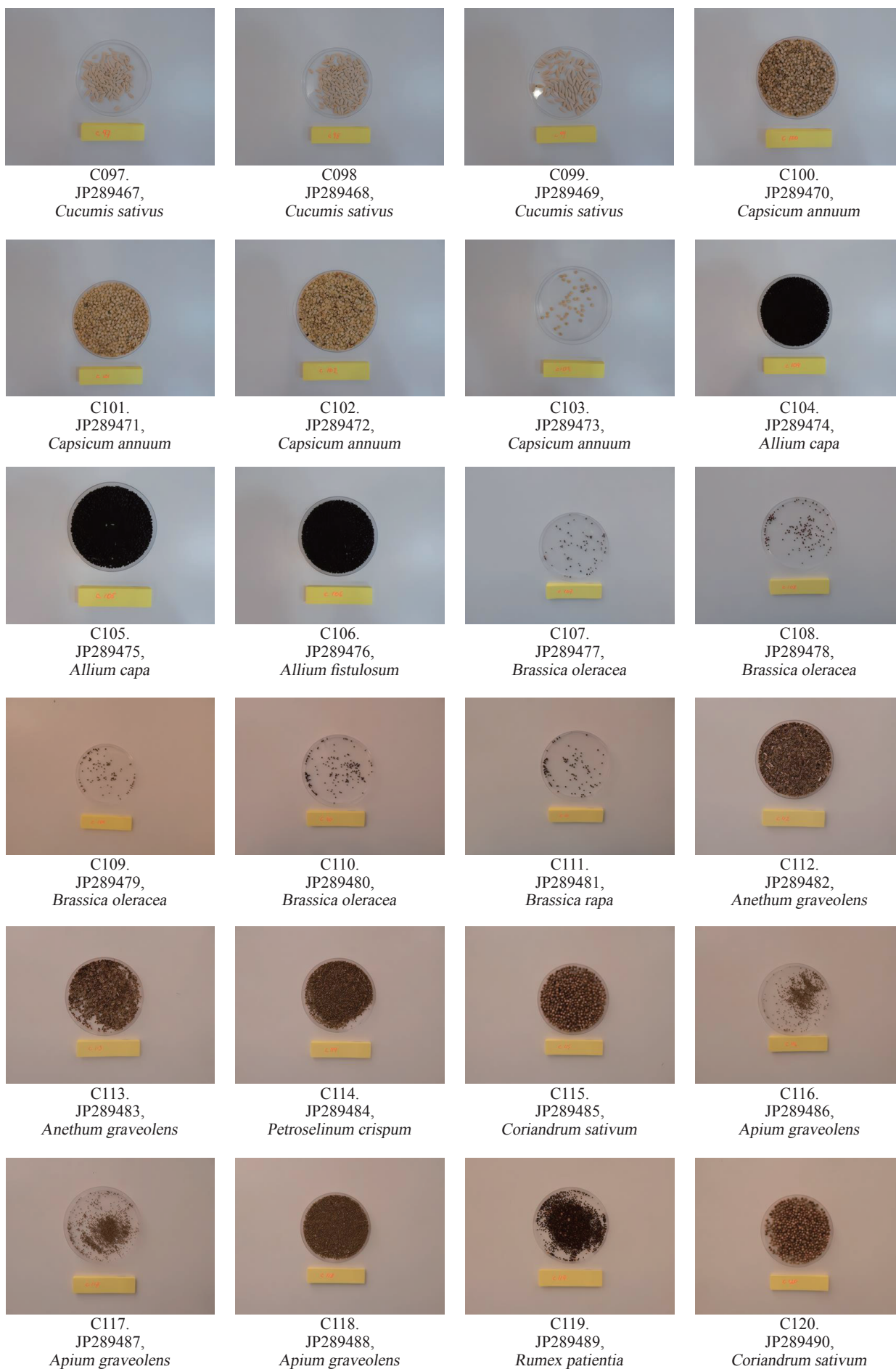


Photo 1. (Continued).

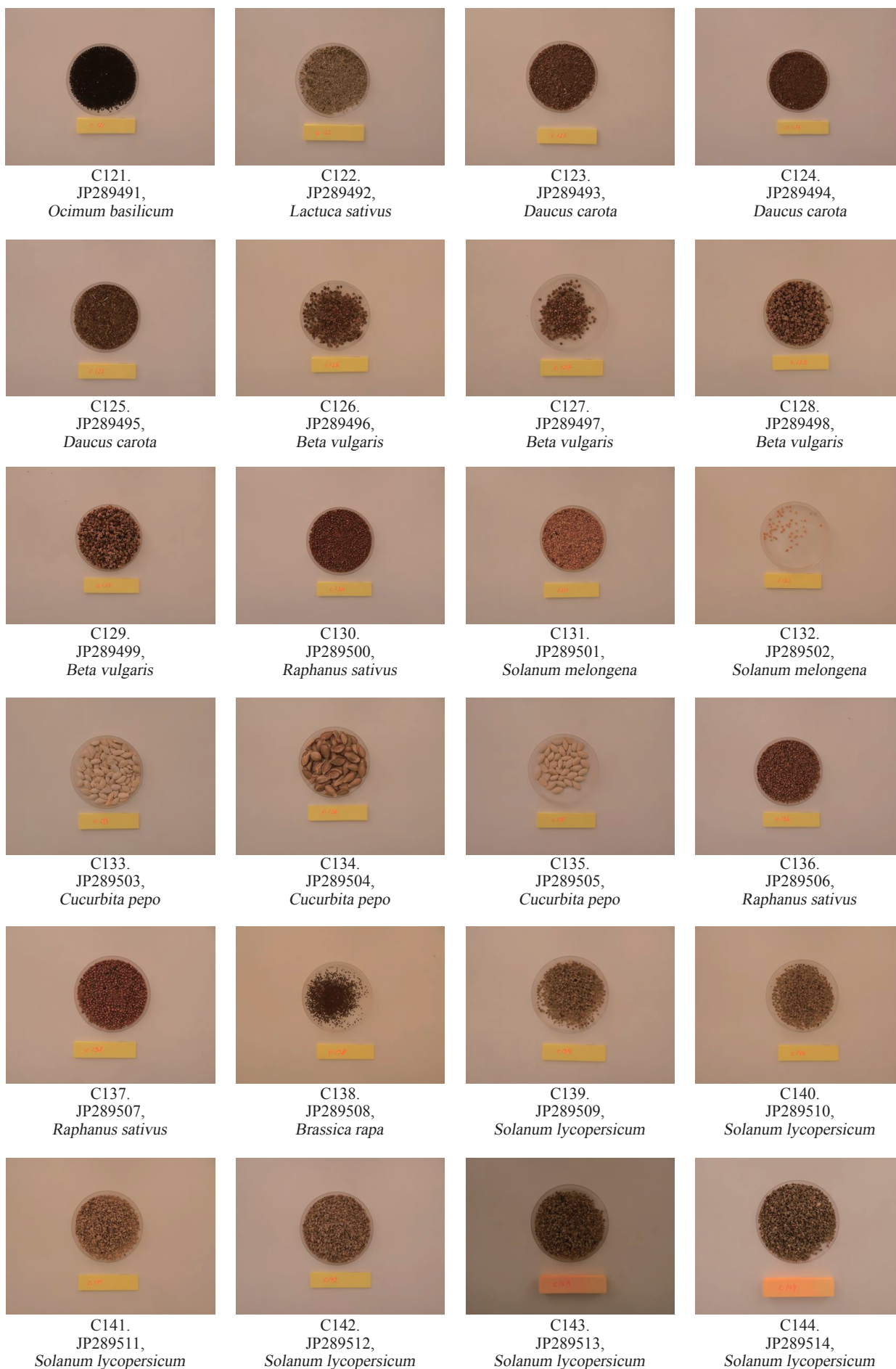
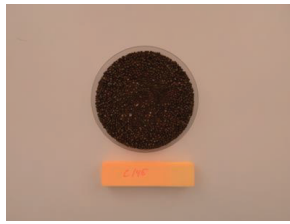
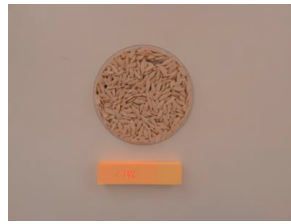


Photo 1. (Continued).



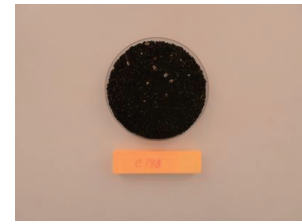
C145.  
JP289515,  
*Brassica oleracea*



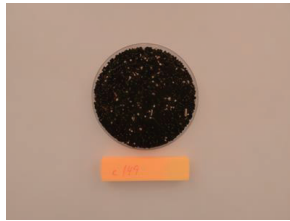
C146.  
JP289516,  
*Cucumis sativus*



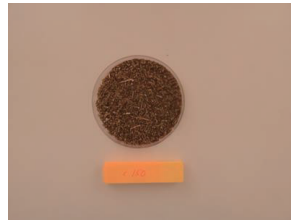
C147.  
JP289517,  
*Cucumis sativus*



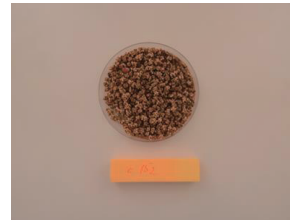
C148.  
JP289518,  
*Allium cepa*



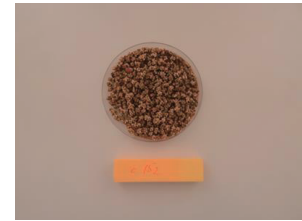
C149.  
JP289519,  
*Allium cepa*



C150.  
JP289520,  
*Daucus carota*



C151.  
JP289521,  
*Daucus carota*



C152.  
JP289522,  
*Beta vulgaris*



C153.  
JP289523,  
*Raphanus sativus*



C154.  
JP289524,  
*Raphanus sativus*



C155.  
JP289525,  
*Capsicum annuum*



C156.  
JP289526,  
*Citrullus lanatus*



C157.  
JP289527,  
*Cucurbita pepo*



C158.  
JP289528,  
*Cucurbita pepo*



C159.  
JP289529,  
*Cucurbita pepo*



C160.  
JP289530,  
*Cucumis melo*



C161.  
JP289531,  
*Cucurbita pepo*



C162.  
JP289532,  
*Cucumis sativus*



C163.  
JP289533,  
*Capsicum annuum*



C164.  
JP289534,  
*Allium cepa*



C165.  
JP289535,  
*Brassica oleracea*



C166.  
JP289536,  
*Raphanus sativus*



C167.  
JP289537,  
*Raphanus sativus*



C168.  
JP289538,  
*Raphanus sativus*

Photo 1. (Continued).



C169.  
JP289539,  
*Cucurbita pepo*



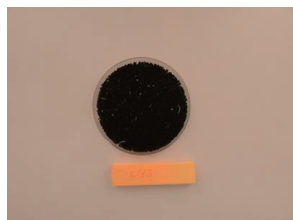
C170.  
JP289540,  
*Solanum lycopersicum*



C171.  
JP289541,  
*Caucis carota*



C172.  
JP289542,  
*Capsicum annuum*



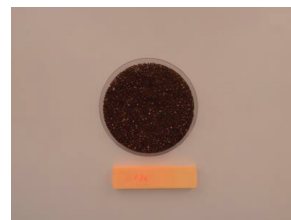
C173.  
JP289543,  
*Allium cepa*



C174.  
JP289544,  
*Raphanus sativus*



C175.  
JP289545,  
*Cucumis sativus*



C176.  
JP289546,  
*Raphanus sativus*



C177.  
JP289547,  
*Brassica oleracea*



C178.  
JP289548,  
*Raphanus sativus*



C179.  
JP289549,  
*Solanum lycopersicum*



C180.  
JP289550,  
*Brassica oleracea*



C181.  
JP289551,  
*Cucumis sativus*



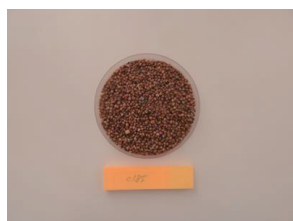
C182.  
JP289552,  
*Capsicum annuum*



C183.  
JP289553,  
*Allium cepa*



C184.  
JP289554,  
*Daucus carota*



C185.  
JP289555,  
*Raphanus sativus*



C186.  
JP289556,  
*Cucumis melo*



C187.  
JP289557,  
*Cucurbita pepo*



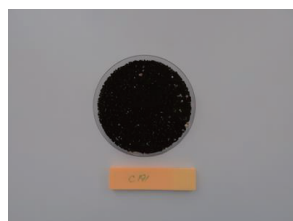
C188.  
JP289558,  
*Solanum lycopersicum*



C189.  
JP289559,  
*Brassica oleracea*



C190.  
JP289560,  
*Cucumis sativus*



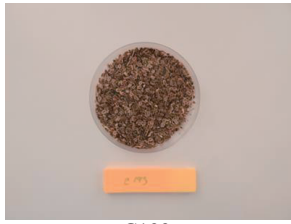
C191.  
JP289561,  
*Allium cepa*



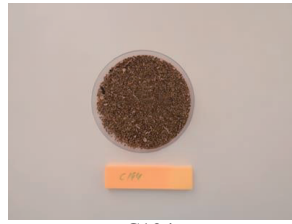
C192.  
JP289562,  
*Solanum lycopersicum*

Photo 1. (Continued).

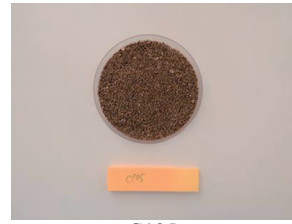




C193.  
JP289563,  
*Anethum graveolens*



C194.  
JP289564,  
*Daucus carota*



C195.  
JP289565,  
*Daucus carota*



C196.  
JP289566,  
*Beta vulgaris*



C197.  
JP289567,  
*Raphanus sativus*



C198.  
JP289568,  
*Raphanus sativus*

Photo 1. (Continued).