

Survey of Vegetable Genetic Resources in Lao PDR in January 2021

Koji MIYATAKE ¹⁾, Tounglieng VILAYPHONE ²⁾, Naly SENGOUNKEO ²⁾,
Thongkhoun SISAPHAITHONG ²⁾

1) *Institute of Vegetable and Floriculture Science, National Agriculture and Food Research Organization (NARO), 3-1-1 Kannondai, Tsukuba, Ibaraki 305-8519, Japan*

2) *Horticultural Research Center, National Agriculture and Forestry Research Institute, Ministry of Agriculture and Forestry, P.O. Box 7170, Vientiane, Lao People's Democratic Republic*

Communicated by H. OKUIZUMI (Research Center of Genetic Resources, NARO)

Received: September 19, 2023; Accepted: February 27, 2023

Corresponding author: K. MIYATAKE (e-mail: miya0424@affrc.go.jp)

Summary

Under a Joint Research Agreement (JRA), the National Institute of Agrobiological Sciences (currently integrated with the National Agriculture and Food Research Organization [NARO]), Japan, and the National Agriculture and Forestry Research Institute (NAFRI), Lao People's Democratic Republic (Lao PDR), have collaborated since 2014 to survey plant genetic resources in Lao PDR. The main objective of the current survey was to collect samples of fruits, leafy vegetables, and related crop species in the Xaysomboun and Xiengkhouang provinces of Lao PDR. Due to COVID-19 regulations, the January 2021 survey was conducted only by Lao PDR scientists. From January 10 to 23, 2021, 154 samples were collected from *Solanum melongena* (60), *Solanum* spp. (27), and *Brassica* spp. (67). A subset of the collected seeds was transferred to the Genetic Resources Center, NARO, Japan, under the Standard Material Transfer Agreement (SMTA) of the International Treaty on Plant Genetic Resources for Food and Agriculture (ITPGRFA). Seeds from these genetic resources will be reproduced via self-pollination, and the NAFRI staff will evaluate the characteristics of the plant material in the next season. Our aim was to evaluate the morphological characteristics and resistance of these species to *Verticillium* wilt, *Fusarium* wilt, bacterial wilt, powdery mildew, and nematodes in Japan.

KEY WORDS: *Solanum*, *Brassica*, Lao People's Democratic Republic, NAFRI, HRC, NARO, PGRAsia

Introduction

Since 2006, the National Institute of Agrobiological Sciences (NIAS, currently integrated with the National Agriculture and Food Research Organization [NARO]) of Japan and the National Agriculture and Forestry Research Institute (NAFRI) of Lao People's Democratic Republic (Lao PDR) have conducted collaborative surveys in Lao PDR for plant genetic resources under the Memorandum of Agreement and the Memorandum of Understanding (Sakata *et al.* 2008; Saito *et al.* 2009;

Matsunaga *et al.* 2010; Okuizumi *et al.* 2011, 2013; Kawase *et al.* 2012).

In 2014, the NIAS and the National Agriculture and Forestry Research Institute NAFRI established a Joint Research Agreement (JRA) under the Plant Genetic Resources in Asia (PGRAsia) project funded by the Ministry of Agriculture, Forestry, and Fisheries of Japan to collect plant genetic resources (Okuizumi *et al.* 2016). This report describes the seventh survey conducted under the PGRAsia project to collect vegetable plant genetic

resources from Lao PDR. The exploration sites were the provinces of Houaphan, Xiengkhouang, Oudomxay, Phongsaly, Luang Namtha, Bou Keo, Sekong, Attapeu, Bolikhamxay, Khammounane, and Savannakhet, and exploration was conducted from 2014 to 2019 (Saito *et al.* 2015, 2016, 2017; Hamato *et al.* 2018; Miyatake *et al.* 2019, 2020). In each experiment, 134, 124, 108, 200, 135, and 163 samples of eggplant (*Solanum* spp., including wild crop relatives) were collected. For the first time, we attempted to collect *Brassica* and *Solanum* species. Due to the logistics of reaching and interacting with minority populations, it is expected that many undescribed landraces still exist in this region.

Methods

Prior to the survey, Dr. Sisaphaithong collected information on eggplant genetic resources in Xaysomboun and Xiengkhouang provinces. Based on this information, we surveyed the area from January 10 to 23, 2021 (Table 1). We rented a car to visit the backyards of local villages and agricultural fields to obtain samples of plants, fruits, and seeds. The work at each site included confirming the GPS location using Google Earth, collecting samples, and interviewing locals to obtain information about the collected plant materials, such as local names, usage, and area of cultivation. Seeds of different types stored by farmers were collected from different accessions. The members of the Horticultural Research Center (HRC) were Dr. Sisaphaithong, Ms. Vilayphone, and Ms. Sengounkeo, who participated in this survey.

Results and Discussions

We surveyed 154 samples from 34 villages in 12 districts in the two provinces (Table 2). The collections included *Solanum melongena* L. (60 samples), *Solanum violaceum* Ortega (6), *Solanum torvum* Sw. (4), *Solanum aethiopicum* L. (16), *Solanum lycopersicum* L. (1), and *Brassica* spp. (67) (Tables 2 and 3). Following the survey, the collected seeds were deposited at NAFRI, and a subset of the collection was transferred to the Genetic Resources Center, NARO (NGRC), Japan, as a backup under the Standard Material Transfer Agreement of the International Treaty on Plant Genetic Resources for Food and Agriculture.

The remainder of this section describes the daily survey details.

Day 1: January 10

We traveled from Vientiane, the capital of Lao PDR, to Xaysomboun province.

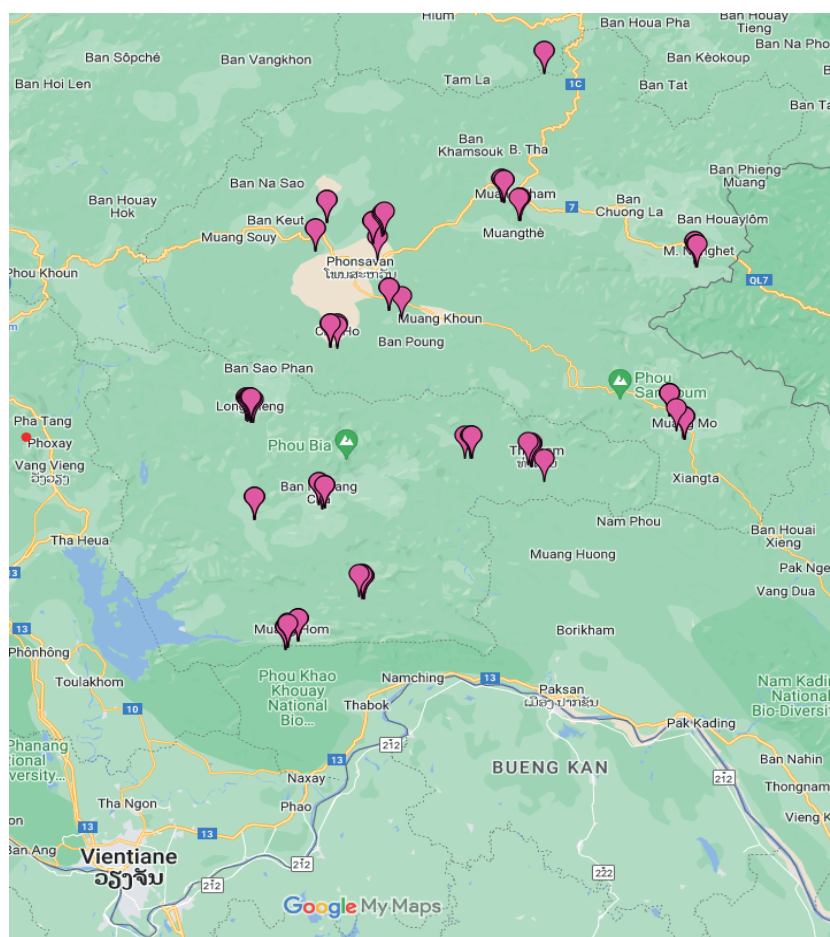
Day 2: January 11 (Anouvong District, Xaysomboun Province)

First, we visited Pouhouxaing Village, where villagers provided 13 accessions (Collection numbers 1-10 and 88-90 in Table 3; Photos 1-13). These included one *Solanum violaceum*, seven *Solanum aethiopicum*, one *Solanum torvum*, one *Solanum lycopersicum*, and three *Brassica* spp.

Next, we visited Phasagab Village, where the villagers provided two accessions (Collection numbers 11 and 12; Photos 14 and 15), including one *Solanum melongena* and one *Solanum aethiopicum*.

Table 1. Itinerary of the survey

Date	Day	Itinerary
10-Jan	Sun	Vientiane -- Xaysomboun
11-Jan	Mon	PAFO, Anouvong district, Xaysomboun province
12-Jan	Tue	Longsan district, Xaysomboun province
13-Jan	Wed	Hom district, Xaysomboun province
14-Jan	Thu	Longaechug district, Xaysomboun province
15-Jan	Fri	Thatom district, Xaysomboun province
16-Jan	Sat	Move to Xiengkhouang province
17-Jan	Sun	PAFO, Prak district, Xiengkhouang province
18-Jan	Mon	Poukonu district, Xiengkhouang province
19-Jan	Tue	Khom district, Xiengkhouang province
20-Jan	Wed	Phaxay district, Xiengkhouang province
21-Jan	Thu	Kham district, Xiengkhouang province
22-Jan	Fri	Nonghet district, Xiengkhouang province
23-Jan	Sat	Mok district, Xiengkhouang Return from Xiengkhouang province to Vientiane



Map data © 2023 Google 50km

Fig. 1. Main sites visited during the January 2021 survey in central and northern Lao PDR plotted on a map provided by Google Inc.

Table 2. Accessions collected

Province	District	Number of villages	<i>Solanum melongena</i>	<i>Solanum violaceum</i>	<i>Solanum torvum</i>	<i>Solanum aethiopicum</i>	<i>Solanum lycopersicum</i>	<i>Brassica</i> sp.	Total
Xaysomboun	Anouvong	3	5	1	1	8	1	3	19
Xaysomboun	Hom	2	5	1		5		5	16
Xaysomboun	Longaechug	1	10	2	2	2		5	21
Xaysomboun	Lonsan	4	5	1				5	11
Xaysomboun	Thatom	3	16	1				7	24
Xiengkhouang	Kham	3	7		1			5	13
Xiengkhouang	Khom	2	1					3	4
Xiengkhouang	Mok	5	10					7	17
Xiengkhouang	Nonghet	2						5	5
Xiengkhouang	Phaxay	2				1		9	10
Xiengkhouang	Poukonu	3	1					4	5
Xiengkhouang	Prak (Phonsave)	4						9	9
Total		34	60	6	4	16	1	67	154

Next, we visited the Nam On Village, where villagers provided 4 accessions (Collection numbers 13-16; Photos 16-19) which were all *Solanum melongena*.

Day 3: January 12 (Lonsan District, Xaysomboun Province)

First, we visited the Khonevat Village, where villagers provided seven accessions (Collection numbers

17-19 and 91-94 in Table 3; Photos 20-26). There were two *Solanum melongena*, one *Solanum violaceum*, and four *Brassica* spp.

Next, we visited Vang Luang Village, where the villagers provided four accessions (collection numbers 20-22 and 95; Photos 27-30). These included three *Solanum melongena* and one *Brassica* sp.

Day 4: January 13 (Hom District, Xaysomboun Province)

First, we visited Mankhien Village, where the villagers provided six accessions (collection numbers 23-25 and 96-98 in Table 3; photos 31-36), including two *Solanum melongena*, one *Solanum violaceum*, and three *Brassica* spp.

Next, we visited the Phalavec Village, where villagers provided 10 accessions (Collection numbers 26-33, 99 and 100; Photos 37-46). These included three *Solanum melongena*, five *Solanum aethiopicum*, and two *Brassica* spp.

Day 5: January 14 (Longaechug District, Xaysomboun Province)

We visited the Longaechug Village, where villagers provided 21 accessions (Collection numbers 34-49 and 101-105 in Table 3; Photos 47-67), including 10 *Solanum melongena*, two *Solanum violaceum*, two *Solanum torvum*, two *Solanum aethiopicum*, and five *Brassica* spp.

Day 6: January 15 (Thatom District, Xaysomboun Province)

First, we visited the Phonchaleun Village, where villagers provided 3 accessions (Collection numbers 50, 51 and 106; Photos 68-70), including two *Solanum melongena* and one *Brassica* sp.

Next, we visited the Nampang Village, where villagers provided 14 accessions (Collection numbers 52-60 and 107-111 in Table 3; Photos 71-84), including nine *Solanum melongena* and five *Brassica* spp.

Next, we visited Pu Village, where the villagers provided seven accessions (collection numbers 61-66 and 112; photos 85-91), including five *Solanum melongena*, one *Solanum violaceum*, and one *Brassica* sp.

Day 7: January 16

We moved to Xiengkhouang Province.

Day 8: January 17 (Prak District, Xiengkhouang Province)

First, we visited Bee Village, where the villagers provided one accession (collection number 113 in Table 3; Photo 92) of a *Brassica* sp.

Next, we visited Lad Buak Village, where the villagers provided two accessions (Collection numbers 120 and 121; Photos 93 and 94). These were 2 *Brassica* spp.

Next, we visited the Na Khon Village, where

villagers provided five accessions (Collection numbers 114-118; Photos 95-99), including five *Brassica* spp.

Next, we visited Viang Village, where villagers provided one accession (collection number 119; Photo 100) of *Brassica* sp.

Day 9: January 18 (Poukonu and Khom Districts, Xiengkhouang Province)

First, we visited Ha Nguam Village, where the villagers provided three accessions (collection numbers 122-124 in Table 3; Photos 101-103). These were 3 *Brassica* spp.

Next, we visited Painglaug Village, where the villagers provided one accession (collection number 67; Photo 104) of one *Solanum melongena*.

Next, we visited Phiang Luang Village, where the villagers provided one accession (collection number 125; Photo 105). There was 1 *Brassica* sp.

Day 10: January 19 (Khom District, Xiengkhouang Province)

First, we visited Nyonsisaisana Village, where villagers provided one accession (collection number 126 in Table 3; Photo 106). There was 1 *Brassica* sp.

Next, we returned to the Hoi Village, where villagers provided 3 accessions (Collection numbers 68, 127 and 128; Photos 107-109), including one *Solanum melongena* and two *Brassica* spp.

Day 11: January 20 (Phaxay District, Xiengkhouang Province)

First, we visited the Nahongnonghone Village, where villagers provided seven accessions (Collection numbers 69 and 129-134 in Table 3; Photos 110-116), including one *Solanum aethiopicum* and six *Brassica* spp.

Next, we visited the Nonghone Village, where villagers provided three accessions (Collection numbers 135-137; Photos 117-119) for three *Brassica* spp.

Day 12: January 21 (Kham District, Xiengkhouang Province)

We visited the Nakhome Village, where villagers provided five accessions (Collection numbers 138-142 in Table 3; Photos 120-124) for five *Brassica* spp.

Day 13: January 22 (Kham and Nonghet Districts, Xiengkhouang Province)

First, we visited the Kwaimo Village, where villagers provided seven accessions (Collection numbers 70-76 in Table 3; Photos 125-131), including six

Solanum melongena and one *Solanum torvum*.

Next, we visited Nathoung Village, where the villagers provided one accession (collection number 77; Photo 132) of *Solanum melongena*.

Next, we returned to Thimxay Village, where the villagers provided two accessions (collection numbers 143 and 144; Photos 133 and 134) of two *Brassica* spp.

Next, we returned to the Noug Khiav Village, where villagers provided three accessions (Collection numbers 145-147; Photos 135-137) for three *Brassica* spp.

Day 14: January 23 (Mok District, Xiengkhouang Province)

First, we visited the Na Mon Village, where villagers provided five accessions (Collection numbers 149-153 in Table 3; Photos 138-142) for five *Brassica* spp.

Next, we visited Nakhom Tai Village, where the villagers provided two accessions (collection numbers 148 and 154; photos 143 and 144) for two *Brassica* spp.

Next, we visited the Nathoung Village, where villagers provided six accessions (Collection numbers 78-83; Photos 145-150). Here, we obtained six *Solanum melongena*.

Next, we visited the Naumoun (Phun Mon) Village, where villagers provided three accessions (Collection numbers 84-86; Photos 151-153). Here, we obtained three *Solanum melongena*.

Next, we visited the Sangmant Village, where the villagers provided one accession (collection number 87; photo 154) for *Solanum melongena*.

After the survey, we returned to Vientiane.

This was the seventh survey in Lao PDR for the PGRAsia project and the first collection of germplasm of *Brassica* species, in addition to eggplants. Local farmers often store *Brassica* species by seed, and there are accessions for which the plant bodies were not identified at that time. After its introduction into Japan, characterization, including species identification, should be conducted and evaluated by experts. However, the genetic resources of eggplants, including related species, are expected to fall within the range of genetic resource diversity found in previous surveys based on fruit appearance, but traits that cannot be determined from appearance, such as disease resistance, need to be confirmed by testing them. As we already worried, climate change may result in damage to agricultural fields and threaten conservation of genetic resources. A major problem is that the loss of genetic resources will prevent the discovery of unutilized plant materials in the

future.

After the survey, we discussed and planned future cooperative activities with the HRC staff, including training them to evaluate eggplant genetic resources and breed new cultivars. To date, more than 1,000 accessions have been collected, of which 600 have been exported to Japan. As usual, the collected seeds will be propagated by self-pollination, and the HRC staff members will evaluate these new plant resources. The seeds produced the following year at the HRC will be shared among the participants of the PGRAsia project in Lao PDR and Japan. In Japan, we evaluated the morphological characteristics and resistance of eggplants to *Verticillium* wilt, *Fusarium* wilt, bacterial wilt, powdery mildew, and nematodes. Based on the information, we can search for good plant materials for breeding in the future.

Acknowledgment

This work was supported by MAFF commissioned project study on “A Collaborative Research Project on Characterization and Evaluation of Plant Genetic Resources for Food and Agriculture (PGRAsia)” Grant Number JPJ007117.

References

- Hamato N, Miyatake K, Vilayphone T, Simeaungkhoun M, Sisaphaithong T and Saito T (2018) Collaborative survey of eggplant genetic resources in Lao PDR, 2017. AREIPGR 34: 81-101. [Genebank, NARO], [JaLC]
- Kawase M, Thadavong S and Watanabe K (2012) The Laos-Japan joint field study on traditional crops and useful plants in Northern areas of Lao PDR, 2011. AREIPGR 28: 139-151. [Genebank, NARO], [JaLC]
- Matsunaga H, Sugiyama M, Tanaka K and Deuanhaksa C (2010) Collaborative exploration of vegetable genetic resources in Laos, 2009. AREIPGR 26: 65-81. [Genebank, NARO], [JaLC]
- Miyatake K, Hamato N, Vilayphone T, Simeaungkhoun M, Sisaphaithong T and Saito T (2019) Collaborative survey of eggplant genetic resources in Lao PDR, 2018. AREIPGR 35: 71-92. [Genebank, NARO], [JaLC]
- Miyatake K, Usami H, Yokota M, Sengounkeo P, Simeaungkhoun M and Sisaphaithong T (2020) Collaborative survey of eggplant genetic resources in Lao PDR, 2019. AREIPGR 36: 57-79. [Genebank, NARO], [JaLC]

- Okuizumi H, Deuanhaksa C, Tagane S, Terajima Y, Uwatoko N, Noguchi T, Nonaka E, Intabon K, Gau M and Sugimoto A (2011) Collaborative exploration of *Sorghum*, *Zea*, *Saccharum* and their relative wild genetic resources in Laos, January, 2011. AREIPGR 27: 129-155.
[Genebank, NARO], [JaLC]
- Okuizumi H, Deuanhaksa C, Tagane S, Terajima Y, Uwatoko N, Noguchi T, Nonaka E, Kanyavong K, Hongphakdy K, Intabon K, Gau M and Sugimoto A (2013) Collaborative exploration for *Sorghum*, *Zea*, *Saccharum* and related wild species in Laos, May to June, 2011. AREIPGR 29: 161-181.
[Genebank, NARO], [JaLC]
- Okuizumi H, Nonaka E, Hongphakdy K, Phengphachanh B and Inagaki S (2016) Collaborative exploration and collection of plant genetic resources in Laos, October 2015. AREIPGR 32: 215-225.
[Genebank, NARO], [JaLC]
- Saito A, Tanaka K and Deuanhaksa C (2009) Collaborative exploration of vegetable genetic resources in Laos, 2008. AREIPGR 25: 111-145.
[Genebank, NARO], [JaLC]
- Saito T, Iwahori H, Sengounkeo P, Vilayphone T, Sisaphaithong T and Okuizumi H (2015) Collaborative exploration of vegetable genetic resources in Laos, 2014. AREIPGR 31: 203-223.
[Genebank, NARO], [JaLC]
- Saito T, Sisaphaithong T, Hamato N, Ogasawara K and Vilayphone T (2016) Collaborative survey of eggplant genetic resources in Laos, 2015. AREIPGR 32: 183-213.
[Genebank, NARO], [JaLC]
- Saito T, Noda S, Kishimoto N, Vilayphone T, Mounnalath S and Sisaphaithong T (2017) Collaborative survey of eggplant genetic resources in Lao PDR, 2016. AREIPGR 33: 115-141.
[Genebank, NARO], [JaLC]
- Sakata Y, Kato K, Saito T, Tanaka K and Deuanhaksa C (2008) Collaborative exploration of vegetables genetic resources in Laos, 2007. AREIPGR 24: 161-183 (in Japanese with English summary).
[Genebank, NARO], [JaLC]

ラオスにおける野菜類遺伝資源の共同探索（2021年1月）

宮武 宏治¹⁾・Tounglieng VILAYPHONE²⁾・Naly SENGOUNKEO²⁾・

Thongkhoun SISAPHAITHONG²⁾

1) 国立研究開発法人 農業・食品産業技術総合研究機構 野菜花き研究部門

2) ラオス農林省 国立農林業研究所 園芸研究センター

和文摘要

本報告は、独立行政法人農業生物資源研究所とラオス農林省国立農林業研究所（NAFRI）との間で2014年に締結された共同研究協定（JRA）に基づいて行われたラオス国における2021年1月のナス遺伝資源の調査報告である。調査は、2021年1月10～23日にかけて実施された。今回、COVID-19感染拡大の影響により、ラオス研究員のみで実施した。我々はラオス国北中部地域であるサイソムブーン県およびシエンクワン県を調査し、ナス栽培種 *Solanum melongena* 60点およびナス近縁種を27点、アブラナ属 *Brassica* spp. 67点の合計154点の種子サンプルを収集した。収集した遺伝資源の種子は、NAFRIにおいて保存されるとともに、定型の素材移転契約（SMTA）を用いて農研機構遺伝資源センターに移転され、保存される予定である。また、NAFRIでは、これら遺伝資源の種子を自殖による増殖の後、特性調査が行われる予定である。さらに、日本では、土壌伝染性病害虫への抵抗性を含む特性が調査され、有望な素材が検索される。

Table 3. The list of vegetable genetic resources collected

Coll. No.	Photo_name	JP No.	Passport No.	JP Name	Date	Genus and species	Province / State	District	Village	North latitude	East longitude	Elevation (m)	Source	Local name
1	<i>Solanum</i> _No. 001	275820	30084352	COL/LAOS/2020/NIVFS-HRC/001	11-Jan.	<i>Solanum lycopersicum</i> L.	Xaysomboun	Anouvong	Pouhouxaing	N18-53-58.44	E103-05-47.59	1,125	backyard	Kuakhom
2	<i>Solanum</i> _No. 002	275821	30084353	COL/LAOS/2020/NIVFS-HRC/002	11-Jan.	<i>Solanum aethiopicum</i> L.	Xaysomboun	Anouvong	Pouhouxaing	N18-53-58.44	E103-05-47.59	1,125	backyard	Kuakhom
3	<i>Solanum</i> _No. 003	275822	30084354	COL/LAOS/2020/NIVFS-HRC/003	11-Jan.	<i>Solanum torvum</i> Swartz.	Xaysomboun	Anouvong	Pouhouxaing	N18-54-00.48	E103-06-00.80	1,125	backyard	Kangpa
4	<i>Solanum</i> _No. 004	275823	30084355	COL/LAOS/2020/NIVFS-HRC/004	11-Jan.	<i>Solanum aethiopicum</i> L.	Xaysomboun	Anouvong	Pouhouxaing	N18-54-02.76	E103-06-02.67	1,127	backyard	Kuakhom
5	<i>Solanum</i> _No. 005	275824	30084356	COL/LAOS/2020/NIVFS-HRC/005	11-Jan.	<i>Solanum aethiopicum</i> L.	Xaysomboun	Anouvong	Pouhouxaing	N18-54-02.76	E103-06-02.67	1,127	backyard	Kuakhom
6	<i>Solanum</i> _No. 006	275825	30084357	COL/LAOS/2020/NIVFS-HRC/006	11-Jan.	<i>Solanum aethiopicum</i> L.	Xaysomboun	Anouvong	Pouhouxaing	N18-54-02.76	E103-06-02.67	1,127	backyard	Kuakhom
7	<i>Solanum</i> _No. 007	275826	30084358	COL/LAOS/2020/NIVFS-HRC/007	11-Jan.	<i>Solanum aethiopicum</i> L.	Xaysomboun	Anouvong	Pouhouxaing	N18-54-02.15	E103-06-03.98	1,127	backyard	Kuakhom
8	<i>Solanum</i> _No. 008	275827	30084359	COL/LAOS/2020/NIVFS-HRC/008	11-Jan.	<i>Solanum violaceum</i> Ortega	Xaysomboun	Anouvong	Pouhouxaing	N18-54-02.47	E103-06-07.22	1,127	backyard	Kingkhom
9	<i>Solanum</i> _No. 009	275828	30084360	COL/LAOS/2020/NIVFS-HRC/009	11-Jan.	<i>Solanum aethiopicum</i> L.	Xaysomboun	Anouvong	Pouhouxaing	N18-53-59.73	E103-06-05.02	1,130	backyard	Kuakhom
10	<i>Solanum</i> _No. 010	275829	30084361	COL/LAOS/2020/NIVFS-HRC/010	11-Jan.	<i>Solanum aethiopicum</i> L.	Xaysomboun	Anouvong	Pouhouxaing	N18-53-59.73	E103-06-05.02	1,130	backyard	Kuakhom
11	<i>Solanum</i> _No. 011	275830	30084362	COL/LAOS/2020/NIVFS-HRC/011	11-Jan.	<i>Solanum aethiopicum</i> L.	Xaysomboun	Anouvong	Phasagab	N18-54-29.36	E103-05-09.94	1,146	backyard	Kuakhom
12	<i>Solanum</i> _No. 012	275831	30084363	COL/LAOS/2020/NIVFS-HRC/012	11-Jan.	<i>Solanum melongena</i> L.	Xaysomboun	Anouvong	Phasagab	N18-54-29.36	E103-05-09.94	1,146	backyard	Markkcua
13	<i>Solanum</i> _No. 013	275832	30084364	COL/LAOS/2020/NIVFS-HRC/013	11-Jan.	<i>Solanum melongena</i> L.	Xaysomboun	Anouvong	Nam On	N18-52-22.64	E102-56-00.98	472	backyard	Markkcua
14	<i>Solanum</i> _No. 014	275833	30084365	COL/LAOS/2020/NIVFS-HRC/014	11-Jan.	<i>Solanum melongena</i> L.	Xaysomboun	Anouvong	Nam On	N18-52-22.64	E102-56-00.98	472	backyard	Markkcua
15	<i>Solanum</i> _No. 015	275834	30084366	COL/LAOS/2020/NIVFS-HRC/015	11-Jan.	<i>Solanum melongena</i> L.	Xaysomboun	Anouvong	Nam On	N18-52-22.64	E102-56-00.98	472	backyard	Markkcua
16	<i>Solanum</i> _No. 016	275835	30084367	COL/LAOS/2020/NIVFS-HRC/016	11-Jan.	<i>Solanum melongena</i> L.	Xaysomboun	Anouvong	Nam On	N18-52-22.64	E102-56-00.98	472	backyard	Markkcua
17	<i>Solanum</i> _No. 017	275836	30084368	COL/LAOS/2020/NIVFS-HRC/017	12-Jan.	<i>Solanum melongena</i> L.	Xaysomboun	Longsan	Khonevat	N18-33-49.84	E103-00-49.84	235	backyard	Markkcuaui
18	<i>Solanum</i> _No. 018	275837	30084369	COL/LAOS/2020/NIVFS-HRC/018	12-Jan.	<i>Solanum melongena</i> L.	Xaysomboun	Longsan	Khonevat	N18-33-30.76	E103-00-47.40	232	backyard	Markkcua
19	<i>Solanum</i> _No. 019	275838	30084370	COL/LAOS/2020/NIVFS-HRC/019	12-Jan.	<i>Solanum violaceum</i> Ortega	Xaysomboun	Longsan	Khonevat	N18-33-34.91	E103-00-51.47	239	backyard	Markkinghom
20	<i>Solanum</i> _No. 020	275839	30084371	COL/LAOS/2020/NIVFS-HRC/020	12-Jan.	<i>Solanum melongena</i> L.	Xaysomboun	Longsan	Vang Luang	N18-34-26.43	E103-02-12.28	227	backyard	Markkcua
21	<i>Solanum</i> _No. 021	275840	30084372	COL/LAOS/2020/NIVFS-HRC/021	12-Jan.	<i>Solanum melongena</i> L.	Xaysomboun	Longsan	Vang Luang	N18-34-26.43	E103-02-12.28	227	backyard	Markkcua
22	<i>Solanum</i> _No. 022	275841	30084373	COL/LAOS/2020/NIVFS-HRC/022	12-Jan.	<i>Solanum melongena</i> L.	Xaysomboun	Longsan	Vang Luang	N18-34-26.45	E103-02-12.30	229	backyard	Markkcua

Table 3. (Continued).

Coll. No.	Photo_name	JP No.	Passport No.	JP Name	Date	Genus and species	Province / State	District	Village	North latitude	East longitude	Elevation (m)	Source	Local name
23	Solanum_No. 023	275842	30084374	COL/LAOS/2020/NIVFS-HRC/023	13-Jan.	<i>Solanum violaceum</i> Ortega	Xaysomboun	Hom	Mankhien	N18-40-59.83	E103-10-56.33	474	backyard	Markking
24	Solanum_No. 024	275843	30084375	COL/LAOS/2020/NIVFS-HRC/024	13-Jan.	<i>Solanum melongena</i> L.	Xaysomboun	Hom	Mankhien	N18-40-59.82	E103-11-26.30	442	farmland	Markkeua
25	Solanum_No. 025	275844	30084376	COL/LAOS/2020/NIVFS-HRC/025	13-Jan.	<i>Solanum melongena</i> L.	Xaysomboun	Hom	Mankhien	N18-40-59.82	E103-11-26.30	442	farmland	Markkeua
26	Solanum_No. 026	275845	30084377	COL/LAOS/2020/NIVFS-HRC/026	13-Jan.	<i>Solanum melongena</i> L.	Xaysomboun	Hom	Phalavec	N18-40-43.07	E103-11-41.23	454	farm store	Markkhom
27	Solanum_No. 027	275846	30084378	COL/LAOS/2020/NIVFS-HRC/027	13-Jan.	<i>Solanum aethiopicum</i> L.	Xaysomboun	Hom	Phalavec	N18-40-43.07	E103-11-41.23	454	farm store	Markkcua
28	Solanum_No. 028	275847	30084379	COL/LAOS/2020/NIVFS-HRC/028	13-Jan.	<i>Solanum aethiopicum</i> L.	Xaysomboun	Hom	Phalavec	N18-40-43.07	E103-11-41.23	454	farm store	Markkcua
29	Solanum_No. 029	275848	30084380	COL/LAOS/2020/NIVFS-HRC/029	13-Jan.	<i>Solanum aethiopicum</i> L.	Xaysomboun	Hom	Phalavec	N18-40-43.07	E103-11-41.23	454	farm store	Markkcua
30	Solanum_No. 030	275849	30084381	COL/LAOS/2020/NIVFS-HRC/030	13-Jan.	<i>Solanum aethiopicum</i> L.	Xaysomboun	Hom	Phalavec	N18-40-43.07	E103-11-41.23	454	farm store	Markkcua
31	Solanum_No. 031	275850	30084382	COL/LAOS/2020/NIVFS-HRC/031	13-Jan.	<i>Solanum aethiopicum</i> L.	Xaysomboun	Hom	Phalavec	N18-40-43.07	E103-11-41.23	454	farm store	Markkcua
32	Solanum_No. 032	275851	30084383	COL/LAOS/2020/NIVFS-HRC/032	13-Jan.	<i>Solanum melongena</i> L.	Xaysomboun	Hom	Phalavec	N18-40-36.92	E103-11-38.26	450	farm store	Markkcuayoa
33	Solanum_No. 033	275852	30084384	COL/LAOS/2020/NIVFS-HRC/033	13-Jan.	<i>Solanum melongena</i> L.	Xaysomboun	Hom	Phalavec	N18-40-45.73	E103-11-29.08	455	farm store	Markkcua
34	Solanum_No. 034	275853	30084385	COL/LAOS/2020/NIVFS-HRC/034	14-Jan.	<i>Solanum melongena</i> L.	Xaysomboun	Longaechug	Longaechug	N19-06-59.38	E102-55-07.57	1,080	farm store	Markkcua
35	Solanum_No. 035	275854	30084386	COL/LAOS/2020/NIVFS-HRC/035	14-Jan.	<i>Solanum torvum</i> Swartz.	Xaysomboun	Longaechug	Longaechug	N19-06-59.38	E102-55-07.57	1,080	backyard	Markking
36	Solanum_No. 036	275855	30084387	COL/LAOS/2020/NIVFS-HRC/036	14-Jan.	<i>Solanum melongena</i> L.	Xaysomboun	Longaechug	Longaechug	N19-06-59.38	E102-55-07.57	1,080	backyard	Markkcua
37	Solanum_No. 037	275856	30084388	COL/LAOS/2020/NIVFS-HRC/037	14-Jan.	<i>Solanum melongena</i> L.	Xaysomboun	Longaechug	Longaechug	N19-06-59.48	E102-55-17.90	1,010	backyard	Markking
38	Solanum_No. 038	275857	30084389	COL/LAOS/2020/NIVFS-HRC/038	14-Jan.	<i>Solanum violaceum</i> Ortega	Xaysomboun	Longaechug	Longaechug	N19-06-59.48	E102-55-18.07	1,010	backyard	Markkcua
39	Solanum_No. 039	275858	30084390	COL/LAOS/2020/NIVFS-HRC/039	14-Jan.	<i>Solanum melongena</i> L.	Xaysomboun	Longaechug	Longaechug	N19-06-59.48	E102-55-17.90	1,010	backyard	Markkcua
40	Solanum_No. 040	275859	30084391	COL/LAOS/2020/NIVFS-HRC/040	14-Jan.	<i>Solanum melongena</i> L.	Xaysomboun	Longaechug	Longaechug	N19-06-59.41	E102-55-26.41	990	backyard	Markkcuakhun
41	Solanum_No. 041	275860	30084392	COL/LAOS/2020/NIVFS-HRC/041	14-Jan.	<i>Solanum melongena</i> L.	Xaysomboun	Longaechug	Longaechug	N19-06-59.41	E102-55-26.23	990	backyard	Markkcuakhun
42	Solanum_No. 042	275861	30084393	COL/LAOS/2020/NIVFS-HRC/042	14-Jan.	<i>Solanum violaceum</i> Ortega	Xaysomboun	Longaechug	Longaechug	N19-06-59.53	E102-55-27.60	1,007	backyard	Markking
43	Solanum_No. 043	275862	30084394	COL/LAOS/2020/NIVFS-HRC/043	14-Jan.	<i>Solanum melongena</i> L.	Xaysomboun	Longaechug	Longaechug	N19-06-53.06	E102-55-28.65	1,007	backyard	Markkcua
44	Solanum_No. 044	275863	30084395	COL/LAOS/2020/NIVFS-HRC/044	14-Jan.	<i>Solanum melongena</i> L.	Xaysomboun	Longaechug	Longaechug	N19-06-53.06	E102-55-28.65	1,007	backyard	Markkcua

Table 3. (Continued).

Coll. No.	Photo_name	JP No.	Passport No.	JP Name	Date	Genus and species	Province / State	District	Village	North latitude	East longitude	Elevation (m)	Source	Local name
45	<i>Solanum</i> _No. 045	275864	30084396	COL/LAOS/2020/NIVFS-HRC/045	14-Jan.	<i>Solanum aethiopicum</i> L.	Xaysomboun	Longaechug	Longaechug	N19-06-53.06	E102-55-28.65	1,007	backyard	Markkcuca
46	<i>Solanum</i> _No. 046	275865	30084397	COL/LAOS/2020/NIVFS-HRC/046	14-Jan.	<i>Solanum aethiopicum</i> L.	Xaysomboun	Longaechug	Longaechug	N19-06-41.14	E102-55-45.11	995	backyard	Markkcuca
47	<i>Solanum</i> _No. 047	275866	30084398	COL/LAOS/2020/NIVFS-HRC/047	14-Jan.	<i>Solanum melongena</i> L.	Xaysomboun	Longaechug	Longaechug	N19-06-40.35	E102-55-46.43	979	backyard	Markkcuca
48	<i>Solanum</i> _No. 048	275867	30084399	COL/LAOS/2020/NIVFS-HRC/048	14-Jan.	<i>Solanum torvum</i> Swartz.	Xaysomboun	Longaechug	Longaechug	N19-06-38.45	E102-55-33.27	990	backyard	Markkking
49	<i>Solanum</i> _No. 049	275868	30084400	COL/LAOS/2020/NIVFS-HRC/049	14-Jan.	<i>Solanum melongena</i> L.	Xaysomboun	Longaechug	Longaechug	N19-06-38.45	E102-55-33.27	990	backyard	Markkcuayoa
50	<i>Solanum</i> _No. 050	275869	30084401	COL/LAOS/2020/NIVFS-HRC/050	15-Jan.	<i>Solanum melongena</i> L.	Xaysomboun	Thatom	Phonchaleun	N19-57-57.68	E103-37-37.39	114	backyard	Markkcuamoy
51	<i>Solanum</i> _No. 051	275870	30084402	COL/LAOS/2020/NIVFS-HRC/051	15-Jan.	<i>Solanum melongena</i> L.	Xaysomboun	Thatom	Phonchaleun	N19-57-57.68	E103-37-37.39	114	backyard	Markkcuamoy
52	<i>Solanum</i> _No. 052	275871	30084403	COL/LAOS/2020/NIVFS-HRC/052	15-Jan.	<i>Solanum melongena</i> L.	Xaysomboun	Thatom	Nampang	N19-00-15.20	E103-35-42.94	215	backyard	Markkcuca
53	<i>Solanum</i> _No. 053	275872	30084404	COL/LAOS/2020/NIVFS-HRC/053	15-Jan.	<i>Solanum melongena</i> L.	Xaysomboun	Thatom	Nampang	N19-00-15.20	E103-35-42.94	215	backyard	Markkcuca
54	<i>Solanum</i> _No. 054	275873	30084405	COL/LAOS/2020/NIVFS-HRC/054	15-Jan.	<i>Solanum melongena</i> L.	Xaysomboun	Thatom	Nampang	N19-00-13.78	E103-35-43.19	215	backyard	Markkcuca
55	<i>Solanum</i> _No. 055	275874	30084406	COL/LAOS/2020/NIVFS-HRC/055	15-Jan.	<i>Solanum melongena</i> L.	Xaysomboun	Thatom	Nampang	N19-00-13.78	E103-35-43.19	215	backyard	Markkcuakin
56	<i>Solanum</i> _No. 056	275875	30084407	COL/LAOS/2020/NIVFS-HRC/056	15-Jan.	<i>Solanum melongena</i> L.	Xaysomboun	Thatom	Nampang	N19-00-13.78	E103-35-43.19	215	backyard	Markkcuakin
57	<i>Solanum</i> _No. 057	275876	30084408	COL/LAOS/2020/NIVFS-HRC/057	15-Jan.	<i>Solanum melongena</i> L.	Xaysomboun	Thatom	Nampang	N19-00-17.19	E103-35-43.01	215	backyard	Markkcuca
58	<i>Solanum</i> _No. 058	275877	30084409	COL/LAOS/2020/NIVFS-HRC/058	15-Jan.	<i>Solanum melongena</i> L.	Xaysomboun	Thatom	Nampang	N19-00-11.63	E103-35-41.74	214	backyard	Markkcuca
59	<i>Solanum</i> _No. 059	275878	30084410	COL/LAOS/2020/NIVFS-HRC/059	15-Jan.	<i>Solanum melongena</i> L.	Xaysomboun	Thatom	Nampang	N19-00-11.63	E103-35-41.74	214	backyard	Markkcuca
60	<i>Solanum</i> _No. 060	275879	30084411	COL/LAOS/2020/NIVFS-HRC/060	15-Jan.	<i>Solanum melongena</i> L.	Xaysomboun	Thatom	Nampang	N19-00-11.63	E103-35-41.74	214	backyard	Markkcuca
61	<i>Solanum</i> _No. 061	275880	30084412	COL/LAOS/2020/NIVFS-HRC/061	15-Jan.	<i>Solanum violaceum</i> Ortega	Xaysomboun	Thatom	Pu	N19-00-31.64	E103-35-10.76	282	backyard	Markkiug
62	<i>Solanum</i> _No. 062	275881	30084413	COL/LAOS/2020/NIVFS-HRC/062	15-Jan.	<i>Solanum melongena</i> L.	Xaysomboun	Thatom	Pu	N19-00-19.72	E103-35-37.99	305	backyard	Markkcuca
63	<i>Solanum</i> _No. 063	275882	30084414	COL/LAOS/2020/NIVFS-HRC/063	15-Jan.	<i>Solanum melongena</i> L.	Xaysomboun	Thatom	Pu	N19-01-21.45	E103-27-02.89	330	backyard	Markkcuca
64	<i>Solanum</i> _No. 064	275883	30084415	COL/LAOS/2020/NIVFS-HRC/064	15-Jan.	<i>Solanum melongena</i> L.	Xaysomboun	Thatom	Pu	N19-01-21.45	E103-27-02.89	330	backyard	Markkcuca
65	<i>Solanum</i> _No. 065	275884	30084416	COL/LAOS/2020/NIVFS-HRC/065	15-Jan.	<i>Solanum melongena</i> L.	Xaysomboun	Thatom	Pu	N19-01-19.70	E103-27-06.12	319	backyard	Markkcuca
66	<i>Solanum</i> _No. 066	275885	30084417	COL/LAOS/2020/NIVFS-HRC/066	15-Jan.	<i>Solanum melongena</i> L.	Xaysomboun	Thatom	Pu	N19-01-19.70	E103-27-06.12	319	backyard	Markkcuca

Table 3. (Continued).

Coll. No.	Photo_name	JP No.	Passport No.	JP Name	Date	Genus and species	Province / State	District	Village	North latitude	East longitude	Elevation (m)	Source	Local name
67	Solanum_No. 067	275886	30084418	COL/LAOS/2020/NIVFS-HRC/067	18-Jan.	<i>Solanum melongena</i> L.	Xiengkhouang	Poukonu	Painglaug	N19-31-56.53	E103-04-47.43	1,086	farm store	Markkcua
68	Solanum_No. 068	275887	30084419	COL/LAOS/2020/NIVFS-HRC/068	18-Jan.	<i>Solanum melongena</i> L.	Xiengkhouang	Khom	Hoi	N19-23-09.91	E103-15-17.72	1,146	farm store	Markkcua
69	Solanum_No. 069	275888	30084420	COL/LAOS/2020/NIVFS-HRC/069	20-Jan.	<i>Solanum aethiopicum</i> L.	Xiengkhouang	Phaxay	Nahongnonghone	N19-17-51.66	E103-06-51.15	1,106	backyard	Kuakhom
70	Solanum_No. 070	275889	30084421	COL/LAOS/2020/NIVFS-HRC/070	22-Jan.	<i>Solanum melongena</i> L.	Xiengkhouang	Kham	Kwaimo	N19-36-23.74	E103-34-06.46	625	backyard	Markkcuanoy
71	Solanum_No. 071	275890	30084422	COL/LAOS/2020/NIVFS-HRC/071	22-Jan.	<i>Solanum melongena</i> L.	Xiengkhouang	Kham	Kwaimo	N19-36-23.74	E103-34-06.46	625	farmland	Markkcuanoy
72	Solanum_No. 072	275891	30084423	COL/LAOS/2020/NIVFS-HRC/072	22-Jan.	<i>Solanum melongena</i> L.	Xiengkhouang	Kham	Kwaimo	N19-36-23.74	E103-34-06.46	625	farmland	Markkcuanoy
73	Solanum_No. 073	275892	30084424	COL/LAOS/2020/NIVFS-HRC/073	22-Jan.	<i>Solanum melongena</i> L.	Xiengkhouang	Kham	Kwaimo	N19-36-23.74	E103-34-06.46	625	farmland	Markkcuanoy
74	Solanum_No. 074	275893	30084425	COL/LAOS/2020/NIVFS-HRC/074	22-Jan.	<i>Solanum melongena</i> L.	Xiengkhouang	Kham	Kwaimo	N19-36-23.74	E103-34-06.46	625	farmland	Markkcuanoy
75	Solanum_No. 075	275894	30084426	COL/LAOS/2020/NIVFS-HRC/075	22-Jan.	<i>Solanum melongena</i> L.	Xiengkhouang	Kham	Kwaimo	N19-36-23.74	E103-34-06.46	625	farmland	Markkcua
76	Solanum_No. 076	275895	30084427	COL/LAOS/2020/NIVFS-HRC/076	22-Jan.	<i>Solanum torvum</i> Swartz.	Xiengkhouang	Kham	Kwaimo	N19-36-23.26	E103-33-59.87	611	backyard	Markking
77	Solanum_No. 077	275896	30084428	COL/LAOS/2020/NIVFS-HRC/077	22-Jan.	<i>Solanum melongena</i> L.	Xiengkhouang	Kham	Nathoung	N19-36-23.98	E103-34-06.79	653	farmland	Markkcuanoy
78	Solanum_No. 078	275897	30084429	COL/LAOS/2020/NIVFS-HRC/078	23-Jan.	<i>Solanum melongena</i> L.	Xiengkhouang	Mok	Nathoung	N19-04-08.76	E103-57-40.63	453	backyard	Markkcua
79	Solanum_No. 079	275898	30084430	COL/LAOS/2020/NIVFS-HRC/079	23-Jan.	<i>Solanum melongena</i> L.	Xiengkhouang	Mok	Nathoung	N19-04-08.76	E103-57-40.63	453	backyard	Markkcua
80	Solanum_No. 080	275899	30084431	COL/LAOS/2020/NIVFS-HRC/080	23-Jan.	<i>Solanum melongena</i> L.	Xiengkhouang	Mok	Nathoung	N19-04-08.76	E103-57-40.63	453	backyard	Markkcua
81	Solanum_No. 081	275900	30084432	COL/LAOS/2020/NIVFS-HRC/081	23-Jan.	<i>Solanum melongena</i> L.	Xiengkhouang	Mok	Nathoung	N19-04-08.76	E103-57-40.63	453	backyard	Markkcua
82	Solanum_No. 082	275901	30084433	COL/LAOS/2020/NIVFS-HRC/082	23-Jan.	<i>Solanum melongena</i> L.	Xiengkhouang	Mok	Nathoung	N19-04-08.76	E103-57-40.63	453	backyard	Markkcua
83	Solanum_No. 083	275902	30084434	COL/LAOS/2020/NIVFS-HRC/083	23-Jan.	<i>Solanum melongena</i> L.	Xiengkhouang	Mok	Nathoung	N19-04-08.76	E103-57-40.63	453	backyard	Markkcua
84	Solanum_No. 084	275903	30084435	COL/LAOS/2020/NIVFS-HRC/084	23-Jan.	<i>Solanum melongena</i> L.	Xiengkhouang	Mok	Naumoun (Phun mon)	N19-07-37.37	E103-55-32.05	425	backyard	Markkcua
85	Solanum_No. 085	275904	30084436	COL/LAOS/2020/NIVFS-HRC/085	23-Jan.	<i>Solanum melongena</i> L.	Xiengkhouang	Mok	Naumoun (Phun mon)	N19-07-37.38	E103-55-29.69	430	backyard	Markkcua
86	Solanum_No. 086	275905	30084437	COL/LAOS/2020/NIVFS-HRC/086	23-Jan.	<i>Solanum melongena</i> L.	Xiengkhouang	Mok	Naumoun (Phun mon)	N19-07-36.69	E103-55-29.59	431	backyard	Markkcua
87	Solanum_No. 087	275906	30084438	COL/LAOS/2020/NIVFS-HRC/087	23-Jan.	<i>Solanum melongena</i> L.	Xiengkhouang	Mok	Sangmant	N19-05-29.43	E103-56-31.74	433	backyard	Markkcua
88	Brassica_No. 001	275907	30084439	COL/LAOS/2020/NIVFS-HRC/088	11-Jan.	<i>Brassica</i> sp.	Xaysomboun	Anouvong	Pouhouxaing	N18-54-02.76	E103-06-02.67	1,127	backyard	Phakkad mong

Table 3. (Continued).

Coll. No.	Photo_name	JP No.	Passport No.	JP Name	Date	Genus and species	Province / State	District	Village	North latitude	East longitude	Elevation (m)	Source	Local name
89	Brassica_No. 002	275908	30084440	COL/LAOS/2020/NIVFS-HRC/089	11-Jan.	<i>Brassica</i> sp.	Xaysomboun	Anouvong	Pouhouxaing	N18-54-02.76	E103-06-02.67	1,127	backyard	Kadnony
90	Brassica_No. 003	275909	30084441	COL/LAOS/2020/NIVFS-HRC/090	11-Jan.	<i>Brassica</i> sp.	Xaysomboun	Anouvong	Pouhouxaing	N18-54-07.60	E103-05-50.13	1,146	backyard	Phakkad mong
91	Brassica_No. 004	275910	30084442	COL/LAOS/2020/NIVFS-HRC/091	12-Jan.	<i>Brassica</i> sp.	Xaysomboun	Longsan	Khonevat	N18-33-30.96	E103-00-47.85	235	backyard	Kadnony
92	Brassica_No. 005	275911	30084443	COL/LAOS/2020/NIVFS-HRC/092	12-Jan.	<i>Brassica</i> sp.	Xaysomboun	Longsan	Khonevat	N18-33-11.91	E103-00-23.91	232	backyard	Phakkad
93	Brassica_No. 006	275912	30084444	COL/LAOS/2020/NIVFS-HRC/093	12-Jan.	<i>Brassica</i> sp.	Xaysomboun	Longsan	Khonevat	N18-33-11.91	E103-00-23.91	232	backyard	Phakkad
94	Brassica_No. 007	275913	30084445	COL/LAOS/2020/NIVFS-HRC/094	12-Jan.	<i>Brassica</i> sp.	Xaysomboun	Longsan	Khonevat	N18-33-11.91	E103-00-23.91	232	backyard	Phakkad
95	Brassica_No. 008	275914	30084446	COL/LAOS/2020/NIVFS-HRC/095	12-Jan.	<i>Brassica</i> sp.	Xaysomboun	Longsan	Vang Luang	N18-34-26.43	E103-02-12.28	227	backyard	Phakkadkhav
96	Brassica_No. 009	275915	30084447	COL/LAOS/2020/NIVFS-HRC/096	13-Jan.	<i>Brassica</i> sp.	Xaysomboun	Hom	Mankhien	N18-40-37.82	E103-11-26.30	442	backyard	Phakkad
97	Brassica_No. 010	275916	30084448	COL/LAOS/2020/NIVFS-HRC/097	13-Jan.	<i>Brassica</i> sp.	Xaysomboun	Hom	Mankhien	N18-40-37.82	E103-11-26.30	442	backyard	Phakkad
98	Brassica_No. 011	275917	30084449	COL/LAOS/2020/NIVFS-HRC/098	13-Jan.	<i>Brassica</i> sp.	Xaysomboun	Hom	Mankhien	N18-40-37.82	E103-11-26.30	442	backyard	Phakkad
99	Brassica_No. 012	275918	30084450	COL/LAOS/2020/NIVFS-HRC/099	13-Jan.	<i>Brassica</i> sp.	Xaysomboun	Hom	Phalavec	N18-40-38.93	E103-11-27.80	454	backyard	Phakkadlao
100	Brassica_No. 013	275919	30084451	COL/LAOS/2020/NIVFS-HRC/100	13-Jan.	<i>Brassica</i> sp.	Xaysomboun	Hom	Phalavec	N18-40-39.13	E103-11-27.12	442	farm store	Phakkad
101	Brassica_No. 014	275920	30084452	COL/LAOS/2020/NIVFS-HRC/101	14-Jan.	<i>Brassica</i> sp.	Xaysomboun	Longaechug	Longaechug	N19-06-56.97	E102-54-48.49	1,080	farm store	Phakkad
102	Brassica_No. 015	275921	30084453	COL/LAOS/2020/NIVFS-HRC/102	14-Jan.	<i>Brassica</i> sp.	Xaysomboun	Longaechug	Longaechug	N19-06-56.97	E102-54-48.49	1,080	farm store	Phakkad
103	Brassica_No. 016	275922	30084454	COL/LAOS/2020/NIVFS-HRC/103	14-Jan.	<i>Brassica</i> sp.	Xaysomboun	Longaechug	Longaechug	N19-06-56.97	E102-54-48.49	1,080	farm store	Phakkad
104	Brassica_No. 017	275923	30084455	COL/LAOS/2020/NIVFS-HRC/104	14-Jan.	<i>Brassica</i> sp.	Xaysomboun	Longaechug	Longaechug	N19-06-57.88	E102-54-47.40	998	backyard	Phakkad
105	Brassica_No. 018	275924	30084456	COL/LAOS/2020/NIVFS-HRC/105	14-Jan.	<i>Brassica</i> sp.	Xaysomboun	Longaechug	Longaechug	N19-06-48.07	E102-55-05.59	980	farmland	Phakkad
106	Brassica_No. 019	275925	30084457	COL/LAOS/2020/NIVFS-HRC/106	15-Jan.	<i>Brassica</i> sp.	Xaysomboun	Thatom	Phonchaleun	N18-57-57.68	E103-37-37.39	114	backyard	Phakkad
107	Brassica_No. 020	275926	30084458	COL/LAOS/2020/NIVFS-HRC/107	15-Jan.	<i>Brassica</i> sp.	Xaysomboun	Thatom	Nampang	N19-00-11.52	E103-35-43.45	123	backyard	Phakkad
108	Brassica_No. 021	275927	30084459	COL/LAOS/2020/NIVFS-HRC/108	15-Jan.	<i>Brassica</i> sp.	Xaysomboun	Thatom	Nampang	N19-00-11.52	E103-35-43.45	123	backyard	Phakkad
109	Brassica_No. 022	275928	30084460	COL/LAOS/2020/NIVFS-HRC/109	15-Jan.	<i>Brassica</i> sp.	Xaysomboun	Thatom	Nampang	N19-00-11.14	E103-35-41.59	215	backyard	Mak opm
110	Brassica_No. 023	275929	30084461	COL/LAOS/2020/NIVFS-HRC/110	15-Jan.	<i>Brassica</i> sp.	Xaysomboun	Thatom	Nampang	N19-00-11.63	E103-35-41.74	214	backyard	Phakkad

Table 3. (Continued).

Coll. No.	Photo_name	JP No.	Passport No.	JP Name	Date	Genus and species	Province / State	District	Village	North latitude	East longitude	Elevation (m)	Source	Local name
111	<i>Brassica</i> _No. 024	275930	30084462	COL/LAOS/2020/NIVFS-HRC/111	15-Jan.	<i>Brassica</i> sp.	Xaysomboun	Thatom	Nampang	N19-00-11.63	E103-35-41.74	214	farmland	Phakkad
112	<i>Brassica</i> _No. 025	275931	30084463	COL/LAOS/2020/NIVFS-HRC/112	15-Jan.	<i>Brassica</i> sp.	Xaysomboun	Thatom	Pu	N19-01-21.12	E103-26-11.58	330	farmland	Phakkad
113	<i>Brassica</i> _No. 026	275932	30084464	COL/LAOS/2020/NIVFS-HRC/113	17-Jan.	<i>Brassica</i> sp.	Xiengkhouang	Prak (Phonsave)	Bee	N19-30-39.15	E103-13-38.09	1,116	backyard	Phakkad
114	<i>Brassica</i> _No. 027	275933	30084465	COL/LAOS/2020/NIVFS-HRC/114	17-Jan.	<i>Brassica</i> sp.	Xiengkhouang	Prak (Phonsave)	Na Khon	N19-32-54.74	E103-12-57.03	1,146	farm store	Phakkadtinni
115	<i>Brassica</i> _No. 028	275934	30084466	COL/LAOS/2020/NIVFS-HRC/115	17-Jan.	<i>Brassica</i> sp.	Xiengkhouang	Prak (Phonsave)	Na Khon	N19-32-56.00	E103-12-58.36	1,136	backyard	Phakkad
116	<i>Brassica</i> _No. 029	275935	30084467	COL/LAOS/2020/NIVFS-HRC/116	17-Jan.	<i>Brassica</i> sp.	Xiengkhouang	Prak (Phonsave)	Na Khon	N19-32-56.00	E103-12-58.36	1,136	backyard	Phakkad
117	<i>Brassica</i> _No. 030	275936	30084468	COL/LAOS/2020/NIVFS-HRC/117	17-Jan.	<i>Brassica</i> sp.	Xiengkhouang	Prak (Phonsave)	Na Khon	N19-32-56.00	E103-12-58.36	1,136	backyard	Phakkad
118	<i>Brassica</i> _No. 031	275937	30084469	COL/LAOS/2020/NIVFS-HRC/118	17-Jan.	<i>Brassica</i> sp.	Xiengkhouang	Prak (Phonsave)	Na Khon	N19-32-56.00	E103-12-58.36	1,136	backyard	Phakkad
119	<i>Brassica</i> _No. 032	275938	30084470	COL/LAOS/2020/NIVFS-HRC/119	17-Jan.	<i>Brassica</i> sp.	Xiengkhouang	Prak (Phonsave)	Viang	N19-34-07.10	E103-14-22.13	1,160	backyard	Phakkad
120	<i>Brassica</i> _No. 033	275939	30084471	COL/LAOS/2020/NIVFS-HRC/120	17-Jan.	<i>Brassica</i> sp.	Xiengkhouang	Prak (Phonsave)	Lad Buak	N19-34-14.56	E103-14-25.72	1,140	farm store	Phakkad
121	<i>Brassica</i> _No. 034	275940	30084472	COL/LAOS/2020/NIVFS-HRC/121	17-Jan.	<i>Brassica</i> sp.	Xiengkhouang	Prak (Phonsave)	Lad Buak	N19-34-21.89	E103-14-35.96	1,127	backyard	Phakkadsony
122	<i>Brassica</i> _No. 035	275941	30084473	COL/LAOS/2020/NIVFS-HRC/122	18-Jan.	<i>Brassica</i> sp.	Xiengkhouang	Poukonu	Ha Nguam	N19-36-04.77	E103-06-19.87	1,145	backyard	Phakkad
123	<i>Brassica</i> _No. 036	275942	30084474	COL/LAOS/2020/NIVFS-HRC/123	18-Jan.	<i>Brassica</i> sp.	Xiengkhouang	Poukonu	Ha Nguam	N19-36-04.77	E103-06-19.87	1,145	farm store	Phakkad
124	<i>Brassica</i> _No. 037	275943	30084475	COL/LAOS/2020/NIVFS-HRC/124	18-Jan.	<i>Brassica</i> sp.	Xiengkhouang	Poukonu	Ha Nguam	N19-36-04.77	E103-06-19.87	1,145	farm store	Phakkad
125	<i>Brassica</i> _No. 038	275944	30084476	COL/LAOS/2020/NIVFS-HRC/125	18-Jan.	<i>Brassica</i> sp.	Xiengkhouang	Poukonu	Phiang Luang	N19-31-56.53	E103-04-47.05	1,089	farm store	Phakkad
126	<i>Brassica</i> _No. 039	275945	30084477	COL/LAOS/2020/NIVFS-HRC/126	19-Jan.	<i>Brassica</i> sp.	Xiengkhouang	Khom	Nyonsisaisana	N19-21-55.29	E103-17-02.60	1,091	backyard	Phakkadnakhiv
127	<i>Brassica</i> _No. 040	275946	30084478	COL/LAOS/2020/NIVFS-HRC/127	19-Jan.	<i>Brassica</i> sp.	Xiengkhouang	Khom	Hoi	N19-23-09.91	E103-15-17.72	1,146	backyard	Phakkadna
128	<i>Brassica</i> _No. 041	275947	30084479	COL/LAOS/2020/NIVFS-HRC/128	19-Jan.	<i>Brassica</i> sp.	Xiengkhouang	Khom	Hoi	N19-23-09.91	E103-15-17.72	1,146	backyard	Phakkad
129	<i>Brassica</i> _No. 042	275948	30084480	COL/LAOS/2020/NIVFS-HRC/129	20-Jan.	<i>Brassica</i> sp.	Xiengkhouang	Phaxay	Nahongnonghone	N19-17-48.15	E103-06-55.36	1,049	backyard	Phakkad
130	<i>Brassica</i> _No. 043	275949	30084481	COL/LAOS/2020/NIVFS-HRC/130	20-Jan.	<i>Brassica</i> sp.	Xiengkhouang	Phaxay	Nahongnonghone	N19-17-48.15	E103-06-55.36	1,049	backyard	Phakkad
131	<i>Brassica</i> _No. 044	275950	30084482	COL/LAOS/2020/NIVFS-HRC/131	20-Jan.	<i>Brassica</i> sp.	Xiengkhouang	Phaxay	Nahongnonghone	N19-17-48.61	E103-06-57.49	1,125	farm store	Phakkad
132	<i>Brassica</i> _No. 045	275951	30084483	COL/LAOS/2020/NIVFS-HRC/132	20-Jan.	<i>Brassica</i> sp.	Xiengkhouang	Phaxay	Nahongnonghone	N19-17-51.66	E103-06-51.15	1,106	backyard	Phakkadna

Table 3. (Continued).

Coll. No.	Photo_name	JP No.	Passport No.	JP Name	Date	Genus and species	Province / State	District	Village	North latitude	East longitude	Elevation (m)	Source	Local name
133	<i>Brassica</i> _No. 046	275952	30084484	COL/LAOS/2020/NIVFS-HRC/133	20-Jan.	<i>Brassica</i> sp.	Xiengkhouang	Phaxay	Nahongnonghone	N19-17-51.66	E103-06-51.15	1,106	backyard	Phakkadnoysony
134	<i>Brassica</i> _No. 047	275953	30084485	COL/LAOS/2020/NIVFS-HRC/134	20-Jan.	<i>Brassica</i> sp.	Xiengkhouang	Phaxay	Nahongnonghone	N19-17-51.66	E103-06-51.15	1,106	backyard	Phakkadnoy
135	<i>Brassica</i> _No. 048	275954	30084486	COL/LAOS/2020/NIVFS-HRC/135	20-Jan.	<i>Brassica</i> sp.	Xiengkhouang	Phaxay	Nonghone	N19-17-51.86	E103-07-57.15	1,107	backyard	Phakkadnoy
136	<i>Brassica</i> _No. 049	275955	30084487	COL/LAOS/2020/NIVFS-HRC/136	20-Jan.	<i>Brassica</i> sp.	Xiengkhouang	Phaxay	Nonghone	N19-17-51.86	E103-07-57.15	1,107	backyard	Phakkadlaosong
137	<i>Brassica</i> _No. 050	275956	30084488	COL/LAOS/2020/NIVFS-HRC/137	20-Jan.	<i>Brassica</i> sp.	Xiengkhouang	Phaxay	Nonghone	N19-17-34.72	E103-07-57.95	1,066	backyard	Phakkadnoy
138	<i>Brassica</i> _No. 051	275957	30084489	COL/LAOS/2020/NIVFS-HRC/138	21-Jan.	<i>Brassica</i> sp.	Xiengkhouang	Kham	Nakhome	N19-39-03.18	E103-31-47.26	641	backyard	Phakkad
139	<i>Brassica</i> _No. 052	275958	30084490	COL/LAOS/2020/NIVFS-HRC/139	21-Jan.	<i>Brassica</i> sp.	Xiengkhouang	Kham	Nakhome	N19-39-05.97	E103-31-30.81	619	framland	Phakkad
140	<i>Brassica</i> _No. 053	275959	30084491	COL/LAOS/2020/NIVFS-HRC/140	21-Jan.	<i>Brassica</i> sp.	Xiengkhouang	Kham	Nakhome	N19-39-05.97	E103-31-30.81	619	framland	Phakkad
141	<i>Brassica</i> _No. 054	275960	30084492	COL/LAOS/2020/NIVFS-HRC/141	21-Jan.	<i>Brassica</i> sp.	Xiengkhouang	Kham	Nakhome	N19-39-02.32	E103-31-47.83	640	backyard	Phakkad
142	<i>Brassica</i> _No. 055	275961	30084493	COL/LAOS/2020/NIVFS-HRC/142	21-Jan.	<i>Brassica</i> sp.	Xiengkhouang	Kham	Nakhome	N19-39-02.32	E103-31-47.83	640	fram store	Phakkad
143	<i>Brassica</i> _No. 056	275962	30084494	COL/LAOS/2020/NIVFS-HRC/143	22-Jan.	<i>Brassica</i> sp.	Xiengkhouang	Nonghet	Thimxay	N19-29-58.12	E103-59-08.22	1,386	backyard	Phakkad
144	<i>Brassica</i> _No. 057	275963	30084495	COL/LAOS/2020/NIVFS-HRC/144	22-Jan.	<i>Brassica</i> sp.	Xiengkhouang	Nonghet	Thimxay	N19-29-58.12	E103-59-08.22	1,386	backyard	Phakkad
145	<i>Brassica</i> _No. 058	275964	30084496	COL/LAOS/2020/NIVFS-HRC/145	22-Jan.	<i>Brassica</i> sp.	Xiengkhouang	Nonghet	Noug Khiav	N19-29-34.49	E103-59-19.45	1,408	backyard	Phakkad
146	<i>Brassica</i> _No. 059	275965	30084497	COL/LAOS/2020/NIVFS-HRC/146	22-Jan.	<i>Brassica</i> sp.	Xiengkhouang	Nonghet	Noug Khiav	N19-29-34.49	E103-59-19.45	1,408	backyard	Phakkad
147	<i>Brassica</i> _No. 060	275966	30084498	COL/LAOS/2020/NIVFS-HRC/147	22-Jan.	<i>Brassica</i> sp.	Xiengkhouang	Nonghet	Noug Khiav	N19-29-33.33	E103-59-26.06	1,401	backyard	Phakkad muang
148	<i>Brassica</i> _No. 061	275967	30084499	COL/LAOS/2020/NIVFS-HRC/148	23-Jan.	<i>Brassica</i> sp.	Xiengkhouang	Mok	Nakhom Tai	N19-04-23.21	E103-57-27.68	445	backyard	Phakkad omk
149	<i>Brassica</i> _No. 062	275968	30084500	COL/LAOS/2020/NIVFS-HRC/149	23-Jan.	<i>Brassica</i> sp.	Xiengkhouang	Mok	Na Mon	N19-07-37.52	E103-55-31.18	417	backyard	Phakkad mong
150	<i>Brassica</i> _No. 063	275969	30084501	COL/LAOS/2020/NIVFS-HRC/150	23-Jan.	<i>Brassica</i> sp.	Xiengkhouang	Mok	Na Mon	N19-07-36.61	E103-55-30.74	413	backyard	Phakkad
151	<i>Brassica</i> _No. 064	275970	30084502	COL/LAOS/2020/NIVFS-HRC/151	23-Jan.	<i>Brassica</i> sp.	Xiengkhouang	Mok	Na Mon	N19-07-36.61	E103-55-30.74	413	backyard	Phakkad
152	<i>Brassica</i> _No. 065	275971	30084503	COL/LAOS/2020/NIVFS-HRC/152	23-Jan.	<i>Brassica</i> sp.	Xiengkhouang	Mok	Na Mon	N19-07-36.61	E103-55-30.74	413	backyard	Phakkad
153	<i>Brassica</i> _No. 066	275972	30084504	COL/LAOS/2020/NIVFS-HRC/153	23-Jan.	<i>Brassica</i> sp.	Xiengkhouang	Mok	Na Mon	N19-07-36.61	E103-55-30.74	413	backyard	Phakkad
154	<i>Brassica</i> _No. 067	275973	30084505	COL/LAOS/2020/NIVFS-HRC/154	23-Jan.	<i>Brassica</i> sp.	Xiengkhouang	Mok	Nakhom Tai	N19-04-23.37	E103-57-27.07	445	backyard	Phakkadkanhong

Sample Photos



Photo 1. *Solanum_No. 001*,
JP275820, *Solanum lycopersicum*



Photo 2. *Solanum_No. 002*,
JP275821, *Solanum aethiopicum*

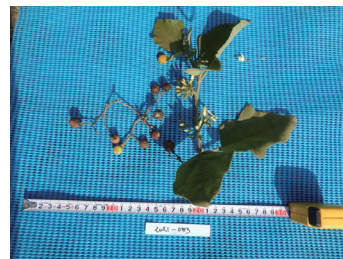


Photo 3. *Solanum_No. 003*,
JP275822, *Solanum torvum*



Photo 4. *Solanum_No. 004*,
JP275823, *Solanum aethiopicum*



Photo 5. *Solanum_No. 005*,
JP275824, *Solanum aethiopicum*



Photo 6. *Solanum_No. 006*,
JP275825, *Solanum aethiopicum*



Photo 7. *Solanum_No. 007*,
JP275826, *Solanum aethiopicum*



Photo 8. *Solanum_No. 008*,
JP275827, *Solanum violaceum*



Photo 9. *Solanum_No. 009*,
JP275828, *Solanum aethiopicum*



Photo 10. *Solanum_No. 010*,
JP275829, *Solanum aethiopicum*



Photo 11. *Brassica_No. 001*,
JP275907, *Brassica* sp.



Photo 12. *Brassica_No. 002*,
JP275908, *Brassica* sp.



Photo 13. *Brassica_No. 003*,
JP275909, *Brassica* sp.

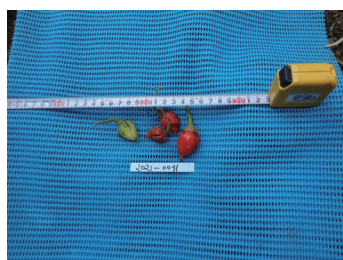


Photo 14. *Solanum_No. 011*,
JP275830, *Solanum aethiopicum*



Photo 15. *Solanum_No. 012*,
JP275831, *Solanum melongena*



Photo 16. *Solanum_No.* 013,
JP275832, *Solanum melongena*



Photo 17. *Solanum_No.* 014,
JP275833, *Solanum melongena*

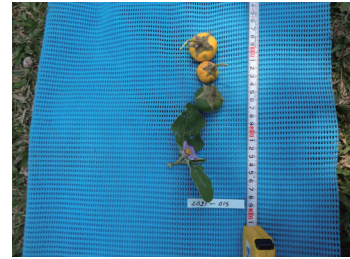


Photo 18. *Solanum_No.* 015,
JP275834, *Solanum melongena*

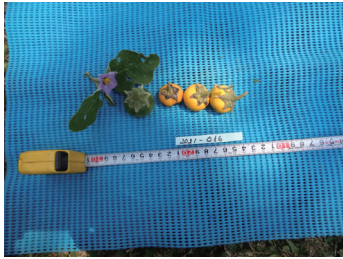


Photo 19. *Solanum_No.* 016,
JP275835, *Solanum melongena*

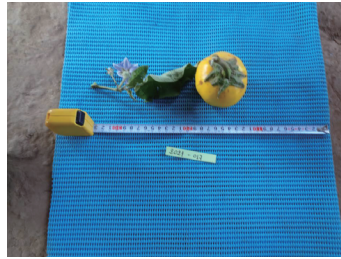


Photo 20. *Solanum_No.* 017,
JP275836, *Solanum melongena*



Photo 21. *Solanum_No.* 018,
JP275837, *Solanum melongena*

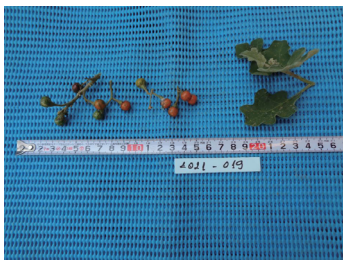


Photo 22. *Solanum_No.* 019,
JP275838, *Solanum violaceum*

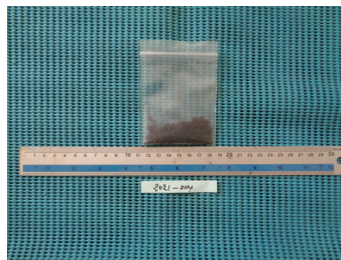


Photo 23. *Brassica_No.* 004,
JP275910, *Brassica* sp.



Photo 24. *Brassica_No.* 005,
JP275911, *Brassica* sp.



Photo 25. *Brassica_No.* 006,
JP275912, *Brassica* sp.

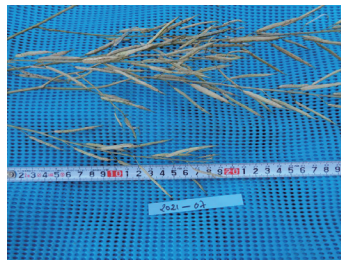


Photo 26. *Brassica_No.* 007,
JP275913, *Brassica* sp.



Photo 27. *Solanum_No.* 020,
JP275839, *Solanum melongena*

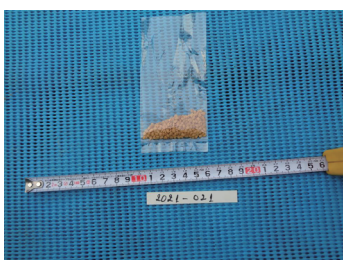


Photo 28. *Solanum_No.* 021,
JP275840, *Solanum melongena*



Photo 29. *Solanum_No.* 022,
JP275841, *Solanum melongena*



Photo 30. *Brassica_No.* 008,
JP275914, *Brassica* sp.

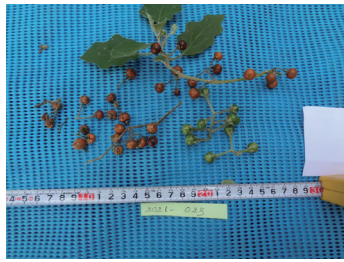


Photo 31. *Solanum*_No. 023,
JP275842, *Solanum violaceum*

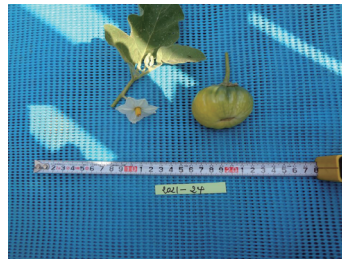


Photo 32. *Solanum*_No. 024,
JP275843, *Solanum melongena*

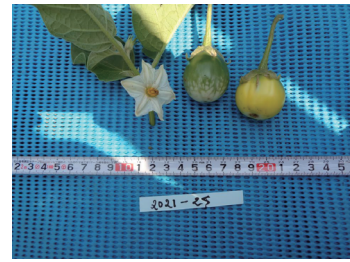


Photo 33. *Solanum*_No. 025,
JP275844, *Solanum melongena*

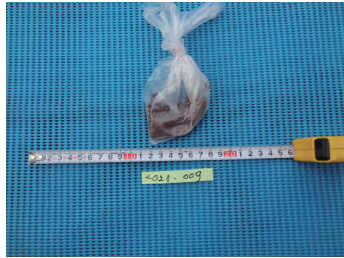


Photo 34. *Brassica*_No. 009,
JP275915, *Brassica* sp.



Photo 35. *Brassica*_No. 010,
JP275916, *Brassica* sp.

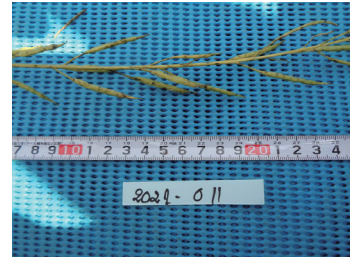


Photo 36. *Brassica*_No. 011,
JP275917, *Brassica* sp.

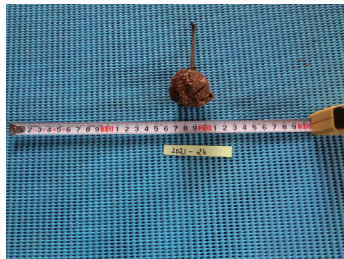


Photo 37. *Solanum*_No. 026,
JP275845, *Solanum melongena*

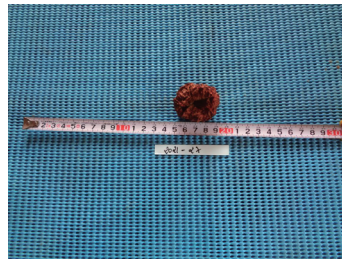


Photo 38. *Solanum*_No. 027,
JP275846, *Solanum aethiopicum*



Photo 39. *Solanum*_No. 028,
JP275847, *Solanum aethiopicum*

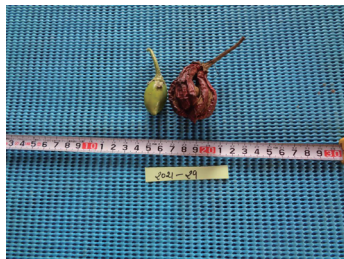


Photo 40. *Solanum*_No. 029,
JP275848, *Solanum aethiopicum*

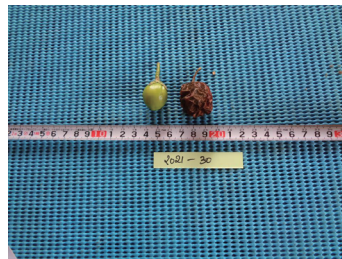


Photo 41. *Solanum*_No. 030,
JP275849, *Solanum aethiopicum*

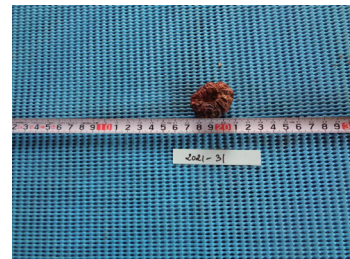


Photo 42. *Solanum*_No. 031,
JP275850, *Solanum aethiopicum*



Photo 43. *Solanum*_No. 032,
JP275851, *Solanum melongena*

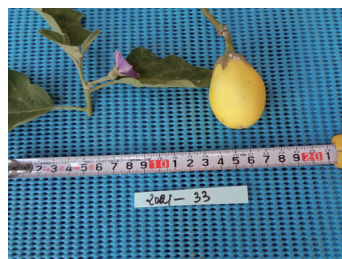


Photo 44. *Solanum*_No. 033,
JP275852, *Solanum melongena*



Photo 45. *Brassica*_No. 012,
JP275918, *Brassica* sp.



Photo 46. *Brassica*_No. 013,
JP275919, *Brassica* sp.



Photo 47. *Solanum*_No. 034,
JP275853, *Solanum melongena*



Photo 48. *Solanum*_No. 035,
JP275854, *Solanum torvum*

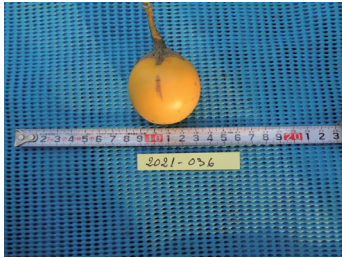


Photo 49. *Solanum*_No. 036,
JP275855, *Solanum melongena*

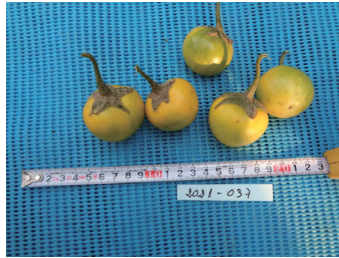


Photo 50. *Solanum*_No. 037,
JP275856, *Solanum melongena*

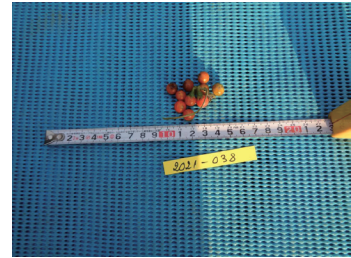


Photo 51. *Solanum*_No. 038,
JP275857, *Solanum violaceum*



Photo 52. *Solanum*_No. 039,
JP275858, *Solanum melongena*

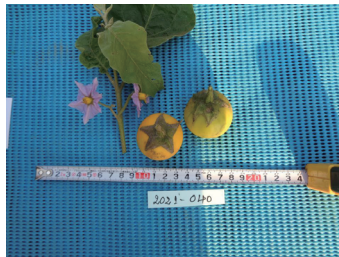


Photo 53. *Solanum*_No. 040,
JP275859, *Solanum melongena*



Photo 54. *Solanum*_No. 041,
JP275860, *Solanum melongena*

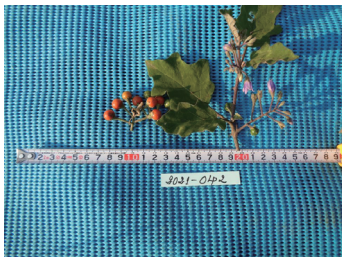


Photo 55. *Solanum*_No. 042,
JP275861, *Solanum violaceum*



Photo 56. *Solanum*_No. 043,
JP275862, *Solanum melongena*



Photo 57. *Solanum*_No. 044,
JP275863, *Solanum melongena*



Photo 58. *Solanum*_No. 045,
JP275864, *Solanum aethiopicum*



Photo 59. *Solanum*_No. 046,
JP275865, *Solanum aethiopicum*



Photo 60. *Solanum*_No. 047,
JP275866, *Solanum melongena*

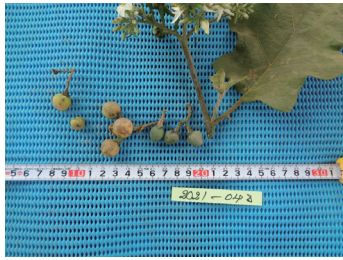


Photo 61. *Solanum*_No. 048,
JP275867, *Solanum torvum*



Photo 62. *Solanum*_No. 049,
JP275868, *Solanum melongena*



Photo 63. *Brassica*_No. 014,
JP275920, *Brassica* sp.

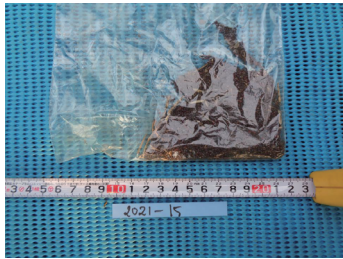


Photo 64. *Brassica*_No. 015,
JP275921, *Brassica* sp.

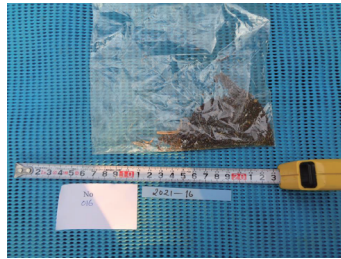


Photo 65. *Brassica*_No. 016,
JP275922, *Brassica* sp.

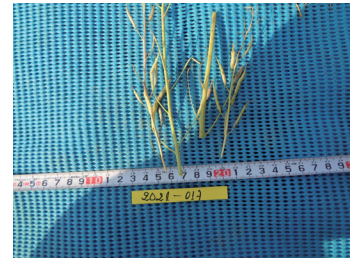


Photo 66. *Brassica*_No. 017,
JP275923, *Brassica* sp.



Photo 67. *Brassica*_No. 018,
JP275924, *Brassica* sp.



Photo 68. *Solanum*_No. 050,
JP275869, *Solanum melongena*



Photo 69. *Solanum*_No. 051,
JP275870, *Solanum melongena*



Photo 70. *Brassica*_No. 019,
JP275925, *Brassica* sp.

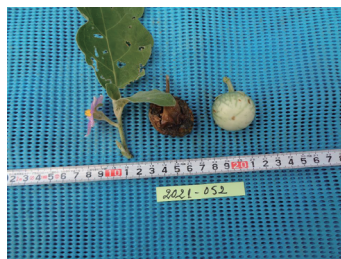


Photo 71. *Solanum*_No. 052,
JP275871, *Solanum melongena*

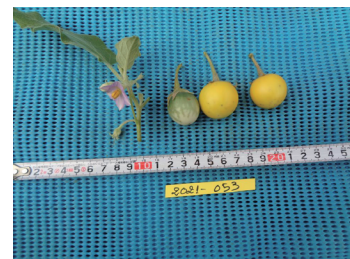


Photo 72. *Solanum*_No. 053,
JP275872, *Solanum melongena*



Photo 73. *Solanum*_No. 054,
JP275873, *Solanum melongena*



Photo 74. *Solanum*_No. 055,
JP275874, *Solanum melongena*



Photo 75. *Solanum*_No. 056,
JP275875, *Solanum melongena*



Photo 76. *Solanum*_No. 057,
JP275876, *Solanum melongena*

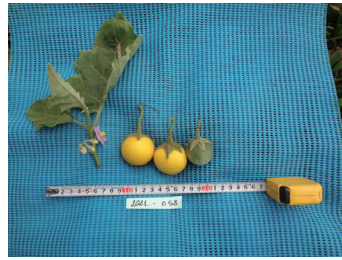


Photo 77. *Solanum*_No. 058,
JP275877, *Solanum melongena*



Photo 78. *Solanum*_No. 059,
JP275878, *Solanum melongena*



Photo 79. *Solanum*_No. 060,
JP275879, *Solanum melongena*

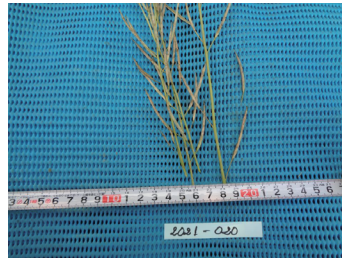


Photo 80. *Brassica*_No. 020,
JP275926, *Brassica* sp.



Photo 81. *Brassica*_No. 021,
JP275927, *Brassica* sp.



Photo 82. *Brassica*_No. 022,
JP275928, *Brassica* sp.



Photo 83. *Brassica*_No. 023,
JP275929, *Brassica* sp.



Photo 84. *Brassica*_No. 024,
JP275930, *Brassica* sp.

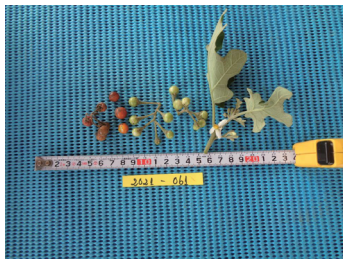


Photo 85. *Solanum*_No. 061,
JP275880, *Solanum violaceum*



Photo 86. *Solanum*_No. 062,
JP275881, *Solanum melongena*



Photo 87. *Solanum*_No. 063,
JP275882, *Solanum melongena*



Photo 88. *Solanum*_No. 064,
JP275883, *Solanum melongena*



Photo 89. *Solanum*_No. 065,
JP275884, *Solanum melongena*



Photo 90. *Solanum*_No. 066,
JP275885, *Solanum melongena*



Photo 91. *Brassica*_No. 025,
JP275931, *Brassica* sp.



Photo 92. *Brassica*_No. 026,
JP275932, *Brassica* sp.



Photo 93. *Brassica*_No. 027,
JP275933, *Brassica* sp.



Photo 94. *Brassica*_No. 028,
JP275934, *Brassica* sp.



Photo 95. *Brassica*_No. 029,
JP275935, *Brassica* sp.



Photo 96. *Brassica*_No. 030,
JP275936, *Brassica* sp.



Photo 97. *Brassica*_No. 031,
JP275937, *Brassica* sp.



Photo 98. *Brassica*_No. 032,
JP275938, *Brassica* sp.



Photo 99. *Brassica*_No. 033,
JP275939, *Brassica* sp.



Photo 100. *Brassica*_No. 034,
JP275940, *Brassica* sp.



Photo 101. *Brassica*_No. 035,
JP275941, *Brassica* sp.



Photo 102. *Brassica*_No. 036,
JP275942, *Brassica* sp.

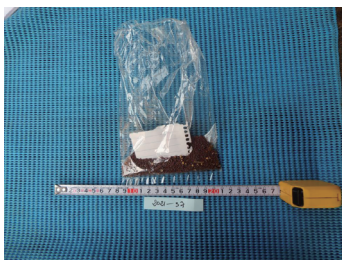


Photo 103. *Brassica*_No. 037,
JP275943, *Brassica* sp.



Photo 104. *Solanum*_No. 067,
JP275886, *Solanum melongena*



Photo 105. *Brassica*_No. 038,
JP275944, *Brassica* sp.



Photo 106. *Brassica*_No. 039, JP275945, *Brassica* sp.



Photo 107. *Solanum*_No. 068, JP275887, *Solanum melongena*



Photo 108. *Brassica*_No. 040, JP275946, *Brassica* sp.



Photo 109. *Brassica*_No. 041, JP275947, *Brassica* sp.



Photo 110. *Solanum*_No. 069, JP275888, *Solanum aethiopicum*



Photo 111. *Brassica*_No. 042, JP275948, *Brassica* sp.



Photo 112. *Brassica*_No. 043, JP275949, *Brassica* sp.



Photo 113. *Brassica*_No. 044, JP275950, *Brassica* sp.

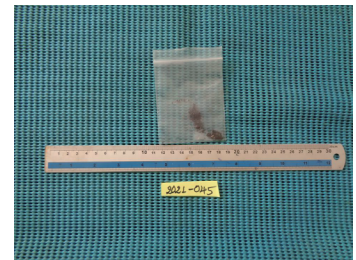


Photo 114. *Brassica*_No. 045, JP275951, *Brassica* sp.



Photo 115. *Brassica*_No. 046, JP275952, *Brassica* sp.



Photo 116. *Brassica*_No. 047, JP275953, *Brassica* sp.



Photo 117. *Brassica*_No. 048, JP275954, *Brassica* sp.



Photo 118. *Brassica*_No. 049, JP275955, *Brassica* sp.



Photo 119. *Brassica*_No. 050, JP275956, *Brassica* sp.



Photo 120. *Brassica*_No. 051, JP275957, *Brassica* sp.



Photo 121. *Brassica*_No. 052,
JP275958, *Brassica* sp.



Photo 122. *Brassica*_No. 053,
JP275959, *Brassica* sp.



Photo 123. *Brassica*_No. 054,
JP275960, *Brassica* sp.

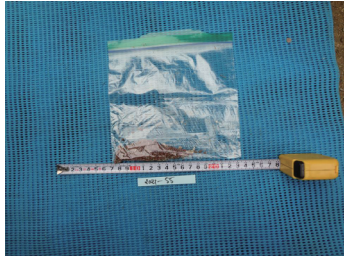


Photo 124. *Brassica*_No. 055,
JP275961, *Brassica* sp.

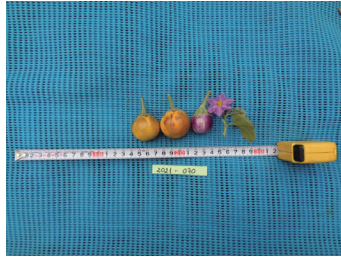


Photo 125. *Solanum*_No. 070,
JP275889, *Solanum melongena*

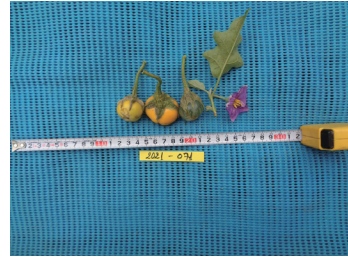


Photo 126. *Solanum*_No. 071,
JP275890, *Solanum melongena*

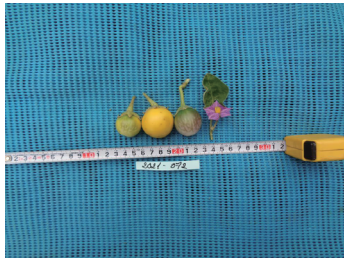


Photo 127. *Solanum*_No. 072,
JP275891, *Solanum melongena*



Photo 128. *Solanum*_No. 073,
JP275892, *Solanum melongena*

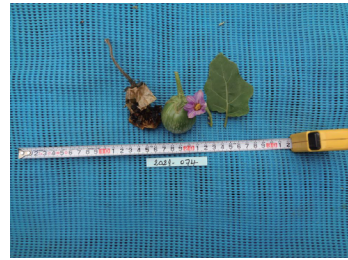


Photo 129. *Solanum*_No. 074,
JP275893, *Solanum melongena*



Photo 130. *Solanum*_No. 075,
JP275894, *Solanum melongena*



Photo 131. *Solanum*_No. 076,
JP275895, *Solanum torvum*



Photo 132. *Solanum*_No. 077,
JP275896, *Solanum melongena*



Photo 133. *Brassica*_No. 056,
JP275962, *Brassica* sp.



Photo 134. *Brassica*_No. 057,
JP275963, *Brassica* sp.



Photo 135. *Brassica*_No. 058,
JP275964, *Brassica* sp.

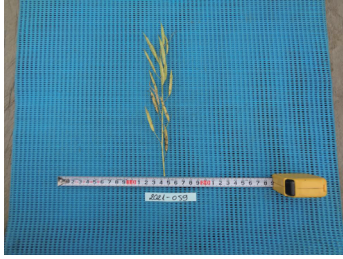


Photo 136. Brassica_No. 059, JP275965, Brassica sp.



Photo 137. Brassica_No. 060, JP275966, Brassica sp.



Photo 138. Brassica_No. 061, JP275967, Brassica sp.



Photo 139. Brassica_No. 062, JP275968, Brassica sp.

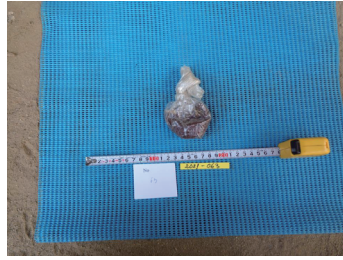


Photo 140. Brassica_No. 063, JP275969, Brassica sp.



Photo 141. Brassica_No. 064, JP275970, Brassica sp.

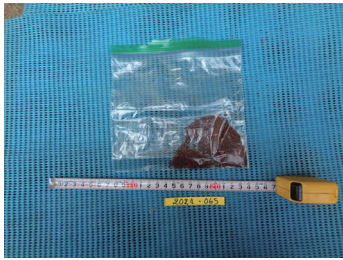


Photo 142. Brassica_No. 065, JP275971, Brassica sp.



Photo 143. Brassica_No. 066, JP275972, Brassica sp.

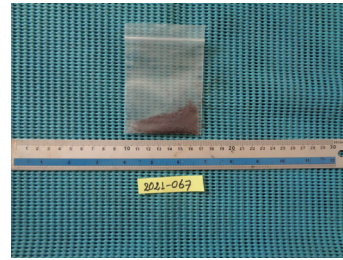


Photo 144. Brassica_No. 067, JP275973, Brassica sp.



Photo 145. Solanum_No. 078, JP275897, Solanum melongena



Photo 146. Solanum_No. 079, JP275898, Solanum melongena



Photo 147. Solanum_No. 080, JP275899, Solanum melongena



Photo 148. Solanum_No. 081, JP275900, Solanum melongena

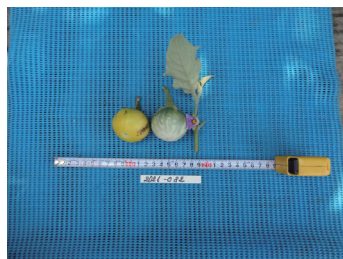


Photo 149. Solanum_No. 082, JP275901, Solanum melongena

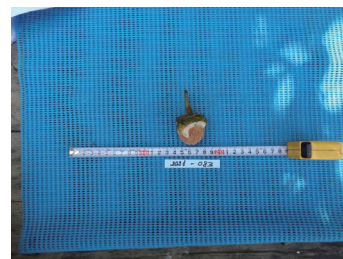


Photo 150. Solanum_No. 083, JP275902, Solanum melongena



Photo 151. *Solanum*_No. 084,
JP275903, *Solanum melongena*

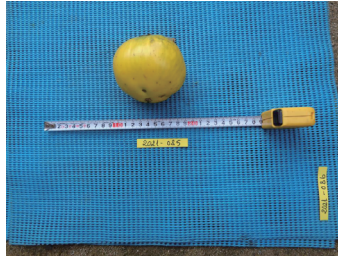


Photo 152. *Solanum*_No. 085,
JP275904, *Solanum melongena*

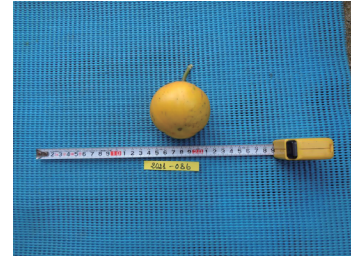


Photo 153. *Solanum*_No. 086,
JP275905, *Solanum melongena*

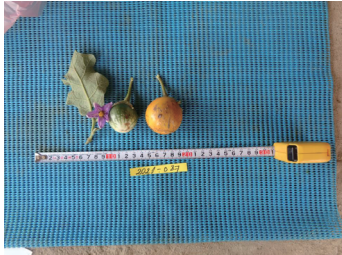


Photo 154. *Solanum*_No. 087,
JP275906, *Solanum melongena*